

# Count on Invitrogen antibodies



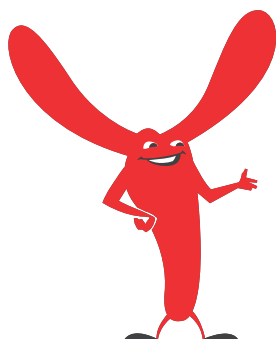
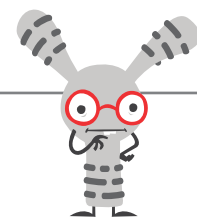
Invitrogen™ antibodies support **9** major application areas

- Flow cytometry
- Immunofluorescence/immunocytochemistry (IF/ICC)
- Western blotting
- Immunohistochemistry (IHC)
- IP/mass spectrometry (MS)
- Immunoprecipitation (IP)/co-IP
- High-content analysis (HCA)
- ELISA
- Assays for the Luminex® platform

They also cover **50** research areas, including cancer/stem cells/neuroscience/immunology/epigenetics



Primary antibodies covering over **85%** of the proteome



**>200,000**  
antibody citations

**291**  
secondary HRP conjugates

**74,000** highly validated primary and secondary antibodies, with reactivities for >60 species, and growing

**815**  
recombinant rabbit antibodies

**18,000**  
custom antibody projects



**24** different colors of Invitrogen™ Alexa Fluor™ dyes for fluorescently labeled secondary antibodies cited in over 30,000 publications



SECONDARY ANTIBODY COMPANY OF THE YEAR

Find out more at [thermofisher.com/antibodies](http://thermofisher.com/antibodies)



**ThermoFisher**  
SCIENTIFIC

**In the United States:**

For customer service, call 1-800-766-7000  
To fax an order, use 1-800-926-1166  
To order online: fishersci.com

**In Canada:**

For customer service, call 1-800-234-7437  
To fax an order, use 1-800-463-2996  
To order online: fishersci.ca

Terms and conditions apply; for complete details go to [thermofisher.com/antibody-performance-guarantee](http://thermofisher.com/antibody-performance-guarantee)

**For Research Use Only. Not for use in diagnostic procedures.** © 2017 Thermo Fisher Scientific Inc. All rights reserved. All trademarks are the property of Thermo Fisher Scientific and its subsidiaries unless otherwise specified. Luminex is a trademark of Luminex Corp. **BN0105168 0317**