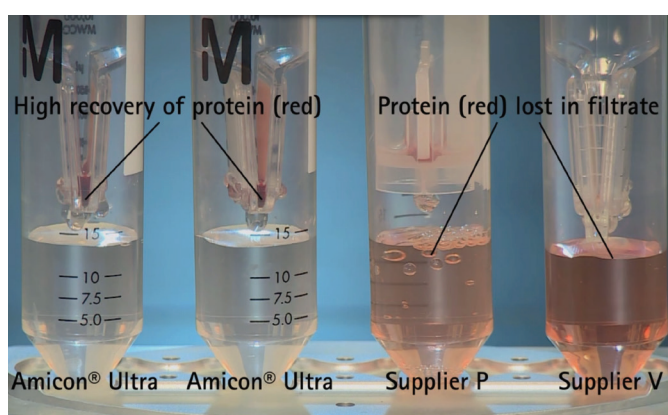


You've come too far to throw it all away

Protect your proteins

Amicon® Ultra:

Amicon® Ultra centrifugal devices have regenerated cellulose membranes, which offer tighter MWCO separations than do PES membranes, resulting in higher levels of protein recovery with minimal flow through losses.



Recovery of cytochrome c (12.5 kDa), Amicon Ultra 4 10 kDa versus competitive 10 kDa devices

Benefits

- Amicon Ultra with regenerated cellulose membranes offer higher recovery than the identical MWCO PES membranes
- Amicon Ultra centrifugals do not contain any sodium azide, which can interfere with downstream experiments

Product	Amicon® Ultra-0.5	Amicon® Ultra-2	Amicon® Ultra-4	Amicon® Ultra-15	
Maximum initial sample volume (mL)	0.5	2	4	15	
Final concentrate (retentate) volume (µL)	15-20	15-70	30-70	150-300	
MWCO	Qty/Pk*				
3,000	24	UFC500324	UFC200324	UFC800324	UFC900324
10,000	24	UFC501024	UFC201024	UFC801024	UFC901024
30,000	24	UFC503024	UFC203024	UFC803024	UFC903024
50,000	24	UFC505024	UFC205024	UFC805024	UFC905024
100,000	24	UFC510024	UFC210024	UFC810024	UFC910024

*Other pack sizes available

Express yourself

With EMD Millipore's protein expression products

Novagen® Overnight Express™ Autoinduction Systems

Expression without IPTG Induction

Features & Benefits

- Effortless protein expression in E. coli without the need for monitoring or induction
- Convenient for routine expression of proteins in multiple cultures or for high-throughput parallel analysis
- High cell densities and protein expression levels

Ordering information

Description	Qty/Pk	Catalogue No.
Overnight Express™ Autoinduction System 1	1 L kit	713003
	5 L kit	713004
Overnight Express™ Instant LB Medium	1 EasyPak	717573
	5 EasyPak	717574
	1 kg	717575
Overnight Express™ Instant TB Medium	1 EasyPak	714913
	5 EasyPak	714914
	1 kg	714915

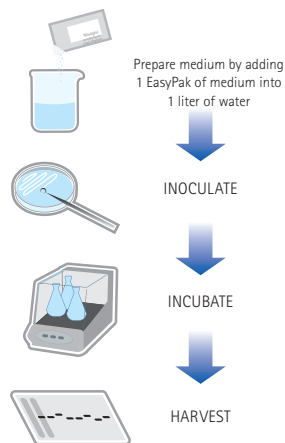
pET E. coli T7 Expression Vectors

The pET System is the most powerful system for the cloning and expression of recombinant proteins in E. coli. The pET System offers numerous pET vector types, different host strains, and many other companion products designed for efficient detection and purification of target proteins.

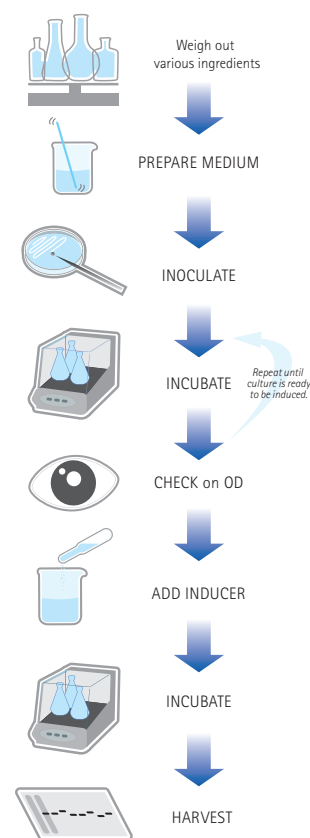
Ordering information

Description	Size	Catalogue No.
pET-15b DNA	10 µg	696613
pET-21a(+) DNA	10 µg	697403
pET-22b(+) DNA	10 µg	697443
pET-28a(+) DNA	10 µg	698643
pET-32a(+) DNA	10 µg	690153

Overnight Express Protocol



Conventional Protocol



www.emdmillipore.com/offices

In the United States:

For customer service, call 1-800-766-7000

To fax an order, use 1-800-926-1166

To order online: www.fishersci.com

In Canada:

For customer service, call 1-800-234-7437

To fax an order, use 1-800-463-2996

To order online: www.fishersci.ca



A Thermo Fisher Scientific Brand