

Companion Diagnostic Services

Your Solution to Companion Diagnostic Bio-Reagent Development, Integration, and Therapeutic Correlation



© 2016 Thermo Fisher Scientific Inc. All rights reserved.
Trademarks used are owned as indicated at www.fishersci.com/trademarks.

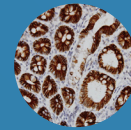
In the United States:

For customer service, call 1-800-766-7000
To fax an order, use 1-800-926-1166
To order online: www.fishersci.com



A Thermo Fisher Scientific Brand

Leveraging Abnova's long-standing expertise in bio-reagent development, we provide integrated solutions to biotech and pharmaceutical customers requiring development of companion diagnostics for personalized medicine. Our ISO9001, ISO13485, GMP certified facilities and dedicated assay team strive to deliver the highest product quality and performance to help you achieve your therapeutic goals faster and better.



Immunohistochemistry

- Monoclonal Antibody, Rabbit and Mouse
- Human Paraffin-Embedded Tissue Sections
- Protein Biomarker Localization
- Qualitative Analysis
- Molecular and Pathological Staging
- Prognosis, Predictive, and Diagnostic Biomarker

Fluorescence *in situ* Hybridization

- BAC derived DNA Probe with Multiple Fluorescent Colors
- Human Paraffin-Embedded Tissue Sections and Cells
- Gene Amplification, Loss, and Translocation
- Quantitative Analysis
- Molecular Staging
- Prognosis, Predictive, and Diagnostic Biomarkers



Sandwich ELISA

- Monoclonal Antibody Pair, Rabbit and Mouse
- Human Plasma and Serum
- Protein Biomarker Capture and Detection
- Quantitative Analysis
- Molecular Staging
- Prognosis, Predictive, and Diagnostic Biomarker