



**Thermo Scientific
Class II, Type A2
Biological Safety Cabinets**

Thermo Scientific Herasafe KS
Thermo Scientific 1300 Series A2

containment. comfort.
convenience.

containment. comfort.

Our Thermo Scientific biological safety cabinets (BSCs) are designed to maximize sample protection and operator safety – every day.

For more than four decades, we have been a pioneer and innovator of BSCs. Our global experience has helped to redefine BSC design, performance and safety – changing the way you work – for the better.

Our BSCs are backed by our technology leadership and market vision to provide safe and reliable cabinets for a wide range of laboratory applications.

5 YEAR
SmartPromise
Comprehensive Warranty
delivers total peace of mind!

technology leadership

Our technical advancements include:

1965

Our first line of clean-air products

1978

Our first NSF-certified BSC

1985

World's first TÜV-certified BSC

1993

World's first BSC with motorized front window and aerosol-tight sealing

convenience.™

global market vision

Our design philosophy is grounded in compliance with current worldwide safety standards.

quality built, premium features

Our BSCs feature German engineering for outstanding reliability and quality. Discover why laboratories around the globe rely on Thermo Scientific BSCs every day.

Thermo Scientific Herasafe KS
Biological Safety Cabinet

ultimate protection, comfort and performance for advanced applications



Thermo Scientific 1300 Series A2
Biological Safety Cabinet

exceptional efficiency, safety and value for daily applications



1995

Our first
LNE-certified BSC

1996

Our first DIN
12980-certified
BSC for cytotoxic
drugs

2002

World's first BSC
with innovative
brushless
dual-DC motor
technology
(Herasafe KS)

2007

Our launch of the
energy efficient
1300 Series A2
BSC

2011

Our first BSC
with SmartPort
tubing organizer



Independently tested and certified to
NSF/ANSI 49 for Class II biological
safety cabinets

innovations in containment

first-to-market with brushless DC motors

In 2002, we pioneered the first innovative brushless DC motor technology. Now available in our full line of BSCs, our DC motor advancements have redefined and transformed BSC energy efficiency, safety, performance and reliability.

Use less energy, reduce costs

DC motors use less energy to operate, so there is less heat emitted back into the lab – delivering better comfort and lower air conditioning costs. On average, our BSCs use 75% less energy than traditional AC motor cabinets.

Exceptional reliability

Our dual-motor BSC design offers an expected lifetime of more than 100,000 hours – at least double the published life of traditional AC motor and single DC motor systems – resulting in significant savings on motor replacements over the life of the cabinet.

Long filter life

Larger mini-pleat H14 HEPA filters and balanced airflow, coupled with eight-inch work aperture, results in higher filtration efficiency and longer filter life than traditional BSCs.

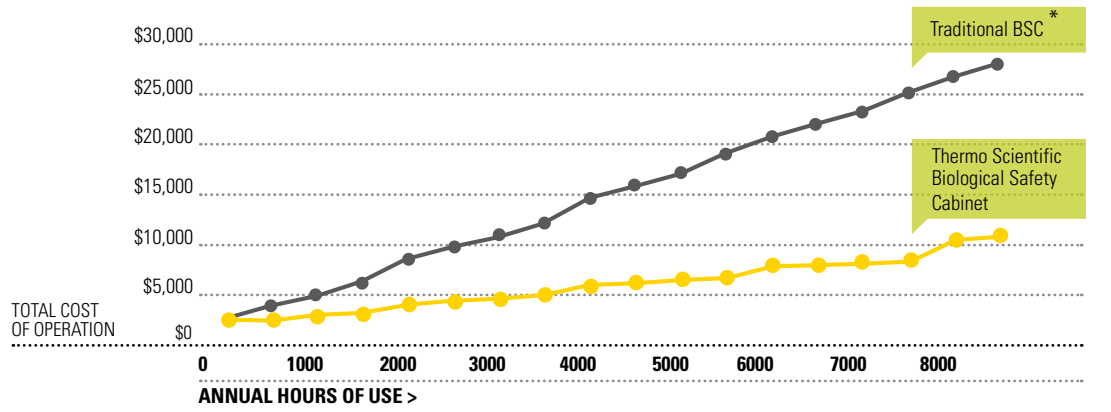


check the watts!

Thermo Scientific biological safety cabinets lead the industry in operational cost efficiency with energy consumption as low as 150W.

optimizing total cost of operation

Our technology innovations in brushless DC motors, Thermo Scientific SmartFlow airflow compensation and balanced filters have led to safer BSCs that are easier to use and significantly less costly to operate.



* Comparison based on 15-year life of 1.2 m wide biological safety cabinets and 2011 average costs of energy and cooling in the U.S. "Traditional BSC" estimates based on published product specifications for BSCs using AC motor technology.

The more you use it, the more you save!

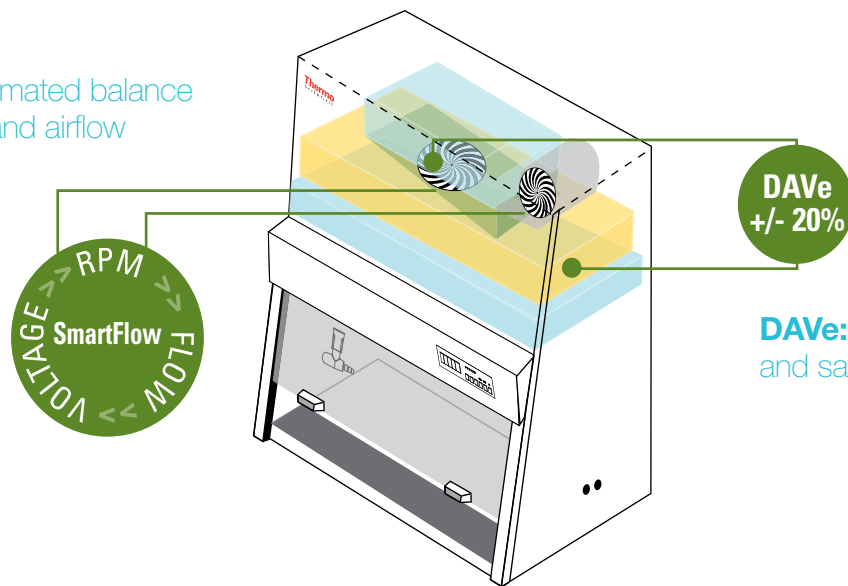
and efficiency

advanced design for peace of mind

A BSC's primary function is to provide cleanliness and containment. Available on our full range of BSCs, our safety innovations – **SmartFlow™**, **Digital Airflow Verification** and **Night Set-Back Mode** – maximize safety and minimize sample contamination.

- ▶ H14 HEPA filters increase filtration efficiency at 99.995%
- ▶ Metal plenums for long life and lasting containment
- ▶ Negative-pressure, dual side walls protect from leaks to the exterior environment

SmartFlow: automated balance of RPM, voltage, and airflow



DAVe: monitoring of user and sample protection

SmartFlow ensures safety

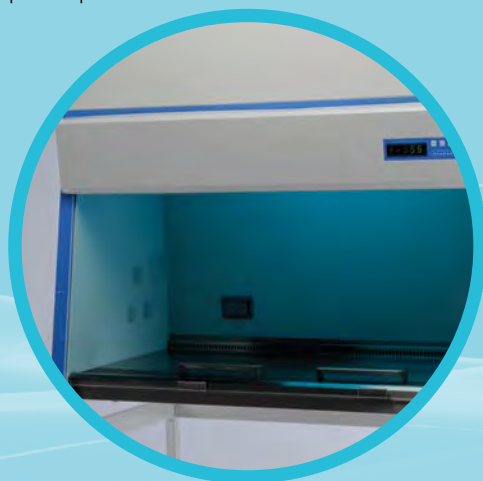
Unique airflow system takes safety and containment to new levels

- Smart DC motors monitor and control fan speed in real time to maintain constant airflow during filter loading or temporary airflow.
- Exclusive to our BSCs, independent supply and exhaust blowers automatically balance both the downflow and inflow velocities to maintain both user and product protection.

Digital Airflow Verification (DAVe) validates protection

Monitoring system alerts user when containment is compromised

- Independent sensors detect pressure changes across the exhaust and downflow plenums.
- Alarm signals when a 20% change in inflow/exhaust or downflow occurs.
- Airflow velocities are displayed on the control panel for monitoring and recording.



Night Set-Back Mode saves energy, maintains sterility

When the front sash is closed, our intelligent speed control automatically reduces blower speed.

- Continuous airflow maintains a sterile working environment, even when the cabinet is not in use.
- Less air flows through the HEPA filters, extending filter life and decreasing energy consumption.
- Night Set-Back is significantly more energy efficient than similar features on competing biological safety cabinets.

designed for comfort and

Thermo Scientific BSCs offer an efficient workspace, improved ergonomics, and added conveniences that provide the user greater productivity and ultimately, better laboratory results.



Sloped front window allows fatigue-free working posture
Bright open chamber improves visibility
Quiet airflow design offers noticeably reduced noise level

Front air-grill arm rest extends user reach inside cabinet

New! Thermo Scientific Ergolign Saddle Stool: Exclusive seat design reduces back strain and fatigue

- Clean-room-ready, with 0.5 μm filtration system within the seat, trapping 99.9% of particles exhausted, fulfilling Class 100 requirements
- Fully adjustable seat height and tilt, using a patented icon plate mechanism
- Stores easily under the BSC to save floor space when not in use

convenience

work smarter, more efficiently

- ▶ Easy to use
- ▶ Easy to clean
- ▶ Extremely quiet to operate

smarter design



NEW SmartPort!

Clean and safe routing for vacuum tubing and cables through the side of the BSC for improved organization and work efficiency. (1300 Series A2 only)

SmartClean™ window design

Our unique window design easily lowers for thorough cleaning of inner surfaces and protects operator by maintaining inflow, even when the window is lowered. (1300 Series A2 only)

SmartClean Plus

Fully open, front-hinged window design allows convenient posture for thorough, easy cleaning and disinfection, with full access to BSC interior. (Herasafe KS only)



Worry-free decontamination

Optional UV light is programmable from 30 minutes to 24 hours, in 30-minute increments, extending bulb life and saving energy.

Powerful cross-beam UV irradiation in both side walls illuminates entire work area, ensuring thorough disinfection of the complete chamber (Herasafe KS only).

Thermo Scientific Herasafe KS

ultimate protection, comfort and performance

for advanced applications

Featuring an advanced design for easy operation and maximum safety, our Herasafe KS BSCs may be used wherever protection is paramount, including research, pharmaceutical quality control labs, pharmacies and clinics or hospitals.

Containment

- **SmartFlow design** automates airflow compensation and balancing
- **Digital Airflow Verification (DAVe)** alerts user to compromised containment
- **Large H14 HEPA filters** remove airborne contaminants
- **Performance Factor safety indicator** displays performance status
- **Cross-beam UV disinfection system** illuminates entire work area without shadows
- **SampleGuard aerosol-tight window sealing** for added sample protection

Comfort

- **Reduced noise level** enhances user focus
- **10° sloped front** for exceptional comfort and ergonomics
- **Spacious work area** with comfortable armrest
- **Transparent side-glass windows** maximize light and visibility

Convenience

- **SmartClean Plus** hinged-front window design for easy cleaning
- **Intuitive eye-level control panel** with handheld controls for ultimate ADA compliance
- **Motorized frameless window sash** ensures safe sash height at the push of a button
- **Scratch-free, 316 stainless steel work surfaces** are available as single or segmented modules and are easy to clean or autoclave
- **Programmable cross-beam UV light** extends bulb life and saves energy



SampleGuard
aerosol-tight window sealing
provides extra containment
when window is closed

Efficiency

- **DC motors** offer low energy consumption and greater than 100,000 hours of use.
- **Night Set-Back Mode** reduces airflow to 30% during low-usage periods
- **Long filter life**
- **Long UV bulb life**



Cross-beam UV

Intuitive eye-level control panel

Transparent side-glass windows

Motorized sash

Optional universal piping/rear wall service taps

316 stainless steel interior

Customizable work surfaces

Optional electric adjustable height stand

More choices.

Choice of 3-, 4-, 5- or 6-foot widths
Available with 10-inch work aperture
Choice of electrical or manual adjustable height stands

Thermo Scientific 1300 Series A2

optimized efficiency, safety and value
for your daily applications

Our Thermo Scientific 1300 Series A2 Class II, Type A2 biological safety cabinets combine safety, energy efficiency and value for today's everyday laboratory and clinical research applications.

Containment

- **SmartFlow design** automates airflow compensation and balancing
- **Digital Airflow Verification (DAVe)** alerts user to compromised containment
- **Large H14 HEPA filters** remove airborne contaminants
- **SmartFlow indicator** displays performance status

Comfort

- **Low noise level** enhances user focus
- **10° sloped front** for exceptional comfort and ergonomics
- **Spacious work area** with comfortable armrest
- **Increased light intensity** for a brighter work environment

Convenience

- **SmartClean** front window design
- **Intuitive control panel** for at-a-glance monitoring
- **SmartPort** organizes tubing and cables
- **Programmable UV light** extends bulb life and saves energy

Intuitive Control Panel: Displays valuable safety and performance data with constant read-out of downflow/inflow velocities



Airflow Read-Out & Hour Counter:

Clearly displays realtime performance data, including inflow and downflow velocities and hours of operation

SmartFlow Indicator:

Visually demonstrates power and capacity to maintain protection

Front Window Status:

Visual and audible alarm indicates whether front window is in correct working position

Night Set-Back Indicator:

Displays reduced speed operation when front window is closed

DAVe Airflow Indicator:

Audible and visual alarms indicate when airflow is safe or restricted



More choices.

- Available in 3-, 4-, 5- or 6-foot widths
- Choice of 8- or 10-inch work aperture
- Choice of SmartCoat interior for glare-free workspace or seamless one-piece stainless steel
- Easy-to-order package configurations with accessories (manual adjustable height stand, UV light and armrest)
- Electrical adjustable height stands are also available

1300 Series A2

shown with optional manual floor stand, floor-stand hanging shelf, vacuum valve and rear-wall tubing clips

Efficiency

- **DC motors** offer low energy consumption and more than 100,000 hours of use.
- **Night Set-Back Mode** reduces airflow to 30% during low-usage periods
- **Long filter life**
- **Long UV bulb life**

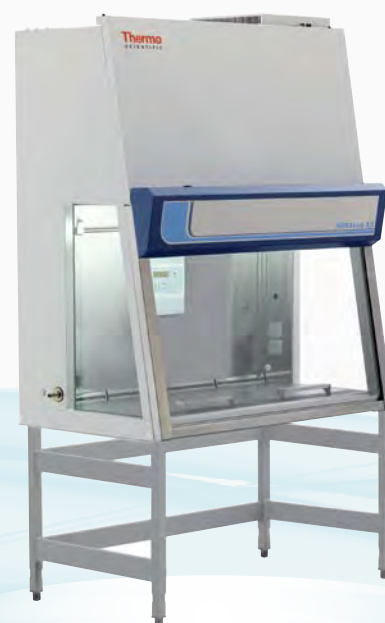
Thermo Scientific Ergolign Saddle Stool

Relieves back pressure and optimizes working posture during long work sessions

Size/Width			3-foot	4-foot	5-foot	6-foot
Dimensions	Exterior dimensions WxHxD	inches	39.4 x 62.4 x 31.5	51.2 x 62.4 x 31.5	63.0 x 62.4 x 31.5	74.8 x 62.4 x 31.5
	Interior dimensions WxHxD	inches	35.4 x 30.7 x 24.8	47.2 x 30.7 x 24.8	59.1 x 30.7 x 24.8	70.9 x 30.7 x 24.8
	Shipping dimensions ¹ WxHxD	inches	43.7 x 69.3 x 36.4	55.5 x 69.3 x 36.4	67.3 x 69.3 x 36.4	79.1 x 69.3 x 36.4
	Working height of front window	inches	10			
	Maximum opening height of front window	inches	30.4			
Weight	Net weight	lbs	375	441	507	617
	Shipping weight ¹	lbs	419	496	573	694
Electrical Data	Voltage	V	120			
	Frequency	Hz	60			
Filter Specification			H14 HEPA EN 1822, 99.995% MPPS			
Certification			NSF/ANSI 49, ETL, CE			
Ergonomics and Utilities	Lighting power	fc	>70	>70	>110	>120
	Receptacles		2 GFI duplex, one on each sidewall			
	Service valves		Up to 4 may be installed through access ports (2 on each side) Up to 6 more may be factory-installed on rear wall (optional)			
10-Inch Work Aperture	Sound pressure level	dB (A)	<65			
	Energy consumption, operating set point ²	W	210	275	350	435
	Energy consumption, Night Set-Back mode	W	40	40	70	70
	Heat output, operating mode (non-vented)	BTU/hr	717	938	1194	1484
	Heat output, Night Set-Back mode (lights off, non-vented)	BTU/hr	136	136	239	239
	Exhaust / Inflow air volume, recirculated	cfm	255	342	428	514
	Exhaust volume, thimble ducted	cfm	332	444	556	668

¹ Export packaging dimensions and weight upon request

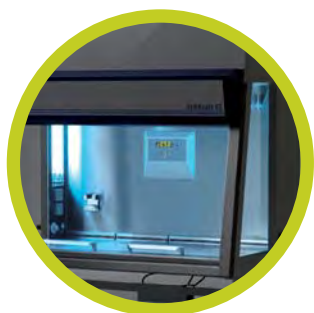
² Clean filters, fans operating at nominal set point, interior lighting activated



ordering info

The Herasafe KS standard configuration includes cabinet, UV light, armrest, 316 stainless steel indented work surface, and battery back-up for motorized sash. Stands must be ordered separately. Fisher Scientific Catalog Numbers

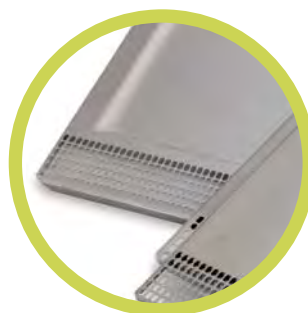
Size/Width		3-foot		4-foot		5-foot		6-foot	
		Thermo Scientific Cat. No.	Fisher Scientific Cat. No.	Thermo Scientific Cat. No.	Fisher Scientific Cat. No.	Thermo Scientific Cat. No.	Fisher Scientific Cat. No.	Thermo Scientific Cat. No.	Fisher Scientific Cat. No.
Standard Configuration	Includes cabinet, cross-beam UV, one-piece indented worktray and battery back-up for front window. Stands are sold separately.	51027116	13-998-000	51027117	13-998-001	51027118	13-998-002	51027120	13-998-003



Cross-beam UV light



Stainless steel armrests



One-piece indented worktray

Size/Width		3-foot		4-foot		5-foot		6-foot	
		Thermo Scientific Cat. No.	Fisher Scientific Cat. No.	Thermo Scientific Cat. No.	Fisher Scientific Cat. No.	Thermo Scientific Cat. No.	Fisher Scientific Cat. No.	Thermo Scientific Cat. No.	Fisher Scientific Cat. No.
Stands: (Must be ordered separately)	Manual adjustable floor stand, 30 to 38 inches in 2-inch increments	50116443	13-998-006	50109312	13-998-007	50116444	13-998-008	50109313	13-998-009
	Electric adjustable floor stand, with cable remote control, 30 to 38 inches working height, 120V*	50119096	13-998-004	50119126	15-453-300	50119127	13-998-005	50119128	15-453-301
	Castor set (may not be used with electric stands; fixed 30-inch work surface height)	50109977	13-998-032	50109977	13-998-032	50109977	13-998-032	50109977	13-998-032



Electric adjustable stand



Manual stand



Castors

*Not available in Canada.

Thermo Scientific Herasafe KS

customer-installed accessories

	Thermo Scientific Cat. No.	Fisher Scientific Cat. No.	Description
Exhaust Transitions	50078796	13-998-022	Thimble duct exhaust transition for Herasafe KS 9 (3 ft) cabinet
	50073770	13-998-023	Thimble duct exhaust transition for Herasafe KS 12 (4 ft) or KS 15 (5 ft) cabinet
	50078795	13-998-024	Thimble duct exhaust transition for Herasafe KS 18 (6 ft) cabinet
	191780	191780	Alnor exhaust alarm for thimble duct, 120v (independent from BSC, plugs into wall outlet)
User Convenience Equipment	50078900	13-998-027	Utility basket for use with hanging bars 50073943 or 1911312
	50078901	13-998-028	2 Utility baskets including additional hanging bar
	50073943	13-998-029	Hanging bar with set of 6 hooks for KS 9 (3 ft) cabinet only
	1911312	15-474-212	Hanging bar with set of 12 hooks for KS 12, 15, 18 (4, 5, 6 ft.) cabinets
	1911313	15-474-213	Replacement stainless steel armrest (set of 2)
	191127	15-474-224	Adjustable foot rest. For ergonomic foot and posture support
	1910179	13-261-361	Shelf to hang from base stand
	1910083	13-261-362	Interior tubing retainer clips (6 per kit)
	ERG-CR-2330	ERG-CR-2330	Thermo Scientific Ergolign Saddle Stool, 23 inch to 30.5 inch adjustable seat height
Sidewall Utilities	1911308	15-474-208	Combustible gas tap for side wall
	1911309	15-474-209	Noncombustible gas tap for side wall
	1911310	15-474-210	Vacuum tap for side wall
	1911311	15-474-211	Water tap for side wall
	50059017	13-998-025	Hose connection to fit through side wall access port, fits 0.5 inch (10-13 mm) inner diameter tubing
	50076408	13-998-026	Hose connection to fit through side wall access port, fits 0.1 inch (3 mm) inner diameter tubing



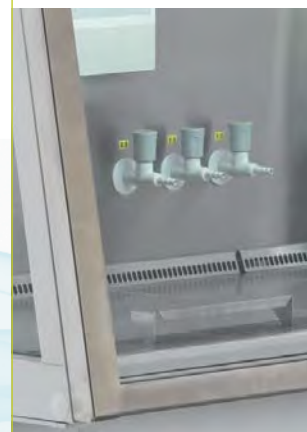
15-474-216
thimble duct exhaust transition



13-998-027
utility basket



15-474-211
water tap for side wall



Optional rear wall 3 service tap connections available as a custom

factory-installed accessories

	Description
Customized Models	The Herasafe KS worksurfaces are fully customizable to accommodate any unique work task. Review ordering information with your Thermo Fisher Scientific sales representative. Lead times will be extended for custom orders.
Worksurfaces	KS 9 (3 ft) without worksurface — required for installation of non-standard worksurface options
	KS 12 (4 ft) without worksurface — required for installation of non-standard worksurface options
	KS 15 (5 ft) without worksurface — required for installation of non-standard worksurface options
	KS 18 (6 ft) without worksurface — required for installation of non-standard worksurface options
	Flat worksurface module 150 mm wide
	Flat worksurface module 300 mm wide
	Flat worksurface module 600 mm wide
	Flat worksurface module 900 mm wide
	Vibration damped worksurface 300 mm width. Constructed in stainless steel with granite plate. For weighing and microscopy equipment
	Vibration damped worksurface 600 mm width. Constructed in stainless steel with granite plate. For weighing and microscopy equipment
	Minisink tabletop insert 300 mm. Holds ~3 liters
	Indented worksurface module 600 mm wide
	Indented worksurface module 900 mm wide
	Indented worksurface module 1200 mm wide
	Indented worksurface module 1500 mm wide
Indented worksurface module 1800 mm wide	
Universal Piping	Rear wall 3 service tap connections, NPT 3/8, left side of cabinet
	Rear wall 3 service tap connections, NPT 3/8, right side of cabinet
	Rear wall 6 service tap connections, NPT 3/8, 3 on left and 3 on right side of cabinet. (May not be used with KS 9 (3 ft) cabinet.)
	Combustible gas tap for rear wall
	Noncombustible gas tap for rear wall
	Vacuum tap for rear wall
	Water tap for rear wall



Optional minisink tabletop insert



Optional 600 mm vibration dampened granite block



Optional 316 stainless steel worksurface configurations

Thermo Scientific 1300 Series A2

specifications

Size / Width			3-foot	4-foot	5-foot	6-foot
Dimensions	Exterior dimensions WxHxD	inches	39.4 x 61.8 x 31.5	51.2 x 61.8 x 31.5	63 x 61.8 x 31.5	74.8 x 61.8 x 31.5
	Interior dimensions WxHxD	inches	35.4 x 30.7 x 24.8	47.2 x 30.7 x 24.8	59.1 x 30.7 x 24.8	70.9 x 30.7 x 24.8
	Shipping dimensions ¹ WxHxD	inches	43.7 x 68.1 x 36.4	55.5 x 68.1 x 36.4	67.3 x 68.1 x 36.4	79.1 x 68.1 x 36.4
	Working height of front window	inches	Choice of 8 or 10			
	Maximum opening height of front window	inches	21			
Weight	Net weight	lbs	375	441	507	617
	Shipping weight ¹	lbs	419	496	573	694
Electrical Data	Voltage	V	120			
	Frequency	Hz	60			
Filter Specification			H14 HEPA EN 1822, 99.995% MPPS			
Certification			NSF/ANSI 49, UL, CE			
Ergonomics	Lighting power	fc	>100	>120	>120	>120
	SmartPort		Two 3" plugged cable ports, one on each side wall			
	Receptacles		2 GFI duplex			
	Service valves		Up to 6 total (3 on each side wall)			
8-Inch Work Aperture	Sound pressure level	dB (A)	<62	<62	<64	<64
	Energy consumption, operating set point ²	W	150	180	280	360
	Energy consumption, Night Set-Back mode	W	70	70	120	120
	Heat output, operating mode (non-vented)	BTU/hr	512	614	955	1228
	Heat output, Night Set-Back mode (lights off, non-vented)	BTU/hr	239	239	410	410
	Exhaust/Inflow air volume	cfm	207	276	344	413
	Exhaust volume, thimble ducted	cfm	269	358	448	537
10-Inch Work Aperture	Sound pressure level	dB (A)	<63	<63	<65	<65
	Energy consumption, operating set point ²	W	170	200	310	400
	Energy consumption, Night Set-Back mode	W	70	70	120	120
	Heat output, operating mode (non-vented)	BTU/hr	580	683	1058	1366
	Heat output, Night Set-Back mode (lights off, non-vented)	BTU/hr	239	239	410	410
	Exhaust/Inflow air volume	cfm	258	344	431	517
	Exhaust volume, thimble ducted	cfm	336	448	560	672

¹ Export packaging dimensions and weight upon request

² Clean filters, fans operating at nominal set point, interior lighting activated



ordering info

Our 1300 Series A2 packages feature everything required to get started, including cabinet, manual adjustable height stand, factory-installed UV light and one set of armrests.

	Size	8-inch work aperture		10-inch work aperture	
		Thermo Scientific Cat. No.	Fisher Scientific Cat. No.	Thermo Scientific Cat. No.	Fisher Scientific Cat. No.
SmartCoat Interior	3-foot	1340	13-261-340	1321	13-261-332
	4-foot	1395	13-261-314	1385	13-261-304
	5-foot	1351	13-261-344	1369	13-261-336
	6-foot	1397	13-261-315	1387	13-261-306
One-piece Stainless Steel Interior	3-foot	1342	13-261-342	1323	13-261-334
	4-foot	1335	13-261-312	1375	13-261-222
	5-foot	1353	13-261-346	1371	13-261-338
	6-foot	1337	13-261-313	1377	13-261-223



Manual adjustable stand



UV light



Stainless steel armrests

To build your own 1300 Series A2, start with these cabinet-only part numbers:

	Size	8-inch work aperture		10-inch work aperture	
		Thermo Scientific Cat. No.	Fisher Scientific Cat. No.	Thermo Scientific Cat. No.	Fisher Scientific Cat. No.
SmartCoat Interior	3-foot	1339	13-261-339	1320	13-261-331
	4-foot	1325	13-261-310	1355	13-261-300
	5-foot	1350	13-261-343	1368	13-261-335
	6-foot	1327	13-261-311	1357	13-261-302
One-piece Stainless Steel Interior	3-foot	1341	13-261-341	1322	13-261-333
	4-foot	1305	13-261-308	1345	13-261-220
	5-foot	1352	13-261-345	1370	13-261-337
	6-foot	1307	13-261-309	1347	13-261-221

Thermo Scientific 1300 Series A2

customer-installed accessories

	Thermo Scientific Cat. No.	Fisher Scientific Cat. No.	Description
Stands	1911400	13-261-347	Manual adjustable stand for 3 foot cabinet, provides work surface height of 30 to 38 inches adjustable in 2 inch increments
	1911302	15-474-202	Manual adjustable stand for 4 foot cabinet, provides work surface height of 30 to 38 inches adjustable in 2 inch increments
	1911401	13-261-348	Manual adjustable stand for 5 foot cabinet, provides work surface height of 30 to 38 inches adjustable in 2 inch increments
	1911303	15-474-203	Manual adjustable stand for 6 foot cabinet, provides work surface height of 30 to 38 inches adjustable in 2 inch increments
	50119096	13-998-004	Electric adjustable stand for 3 foot cabinet (120V), provides infinite height adjustability of 30 to 38 inches*
	50119126	15-453-300	Electric adjustable stand for 4 foot cabinet (120V), provides infinite height adjustability of 30 to 38 inches*
	50119127	13-998-005	Electric adjustable stand for 5 foot cabinet (120V), provides infinite height adjustability of 30 to 38 inches*
	50119128	15-453-301	Electric adjustable stand for 6 foot cabinet (120V), provides infinite height adjustability of 30 to 38 inches*
	1911409	13-261-349	Rolling castor stand for 3 foot cabinet, provides fixed height of 30 inches
	1911322	15-474-325	Rolling castor stand for 4 foot cabinet, provides fixed height of 30 inches
	1911410	13-261-350	Rolling castor stand for 5 foot cabinet, provides fixed height of 30 inches
	1911346	15-474-326	Rolling castor stand for 6 foot cabinet, provides fixed height of 30 inches
Exhaust Transitions	1911316	15-474-216	Thimble duct exhaust transition for 3, 4 and 5 foot cabinet
	1911317	15-474-217	Thimble duct exhaust transition for 6 foot cabinet
	1910185	1910185	Alnor exhaust alarm for 1300 Series A2 biological safety cabinets, qualified install only
User Convenience Equipment	1910083	13-261-362	Interior tubing retainer clips (6 per kit)
	1910179	13-261-361	Hanging shelf for base stand
	1911313	15-474-213	Stainless steel armrest (set of two)
	191127	15-474-224	Adjustable footrest
	1910112	13-261-363	Replacement SmartPort grommets (4 per kit)
	ERG-CR-2330	ERG-CR-2330	Thermo Scientific Ergolign Saddle Stool, 23 inch to 30.5 inch adjustable seat height
	1911413	13-261-351	IV bag holder kit with 6 hooks (for 3 foot cabinet only)
	1911312	15-474-212	IV bag holder kit with 12 hooks (for 4 foot, 5 foot, and 6 foot cabinet)
Universal Piping Utilities	249098	13-261-360	Stainless steel ball valve (replaces standard non-corrosive PVC drain valve)
Sidewall Utilities	1911308	15-474-208	Combustible gas valve
	1911309	15-474-209	Non-combustible gas valve
	1911310	15-474-210	Vacuum valve
	1911311	15-474-211	Water valve



13-261-361
hanging shelf for base stand



ERG-CR-2330
Ergolign Saddle Stool



15-474-224
optional adjustable footrest

*Not available in Canada.

factory-installed accessories

	Thermo Scientific Cat. No.	Fisher Scientific Cat. No.	Description
Light Option	1911319	15-474-219	UV light option for 3 foot or 4 foot cabinet
	1911368	15-474-327	UV light option for 5 foot or 6 foot cabinet
Universal Piping	1910286	13-261-352	For 3 foot coated interior models, right side
	1910287	13-261-353	For 3 foot coated interior models, left side
	1911321	15-474-221	For 4 foot coated interior models, right side
	1911369	15-474-322	For 4 foot coated interior models, left side
	1910288	13-261-354	For 5 foot coated interior models, right side
	1910289	13-261-355	For 5 foot coated interior models, left side
	1911367	15-474-323	For 6 foot coated interior models, right side
	1911370	15-474-324	For 6 foot coated interior models, left side
	1910290	13-261-356	For 3 foot stainless interior models, right side
	1910291	13-261-357	For 3 foot stainless interior models, left side
	1911381	13-261-224	For 4 foot stainless interior models, right side
	1911382	13-261-225	For 4 foot stainless interior models, left side
	1910293	13-261-358	For 5 foot stainless interior models, right side
	1910294	13-261-359	For 5 foot stainless interior models, left side
	1911383	13-261-227	For 6 foot stainless interior models, right side
	1911384	13-261-228	For 6 foot stainless interior models, left side
Universal Piping Utilities	1911304	15-474-204	Combustible gas valve for universal piping option
	1911305	15-474-205	Non-combustible gas valve for universal piping option
	1911306	15-474-206	Vacuum valve for universal piping option
	1911307	15-474-207	Water valve for universal piping option

Provides two pre-plumbed ports with connections to top, side or bottom of the cabinet



Universal piping

Your choice for containment, comfort and convenience



Quick Comparison Chart		Traditional BSC	Herasafe KS	1300 Series A2
Containment	SmartFlow dual motor design		•	•
	Digital Airflow Verification (DAVe) monitoring		•	•
	Night Set-Back mode (maintains sterility)		•	•
	H14 HEPA filters (99.995% efficiency at MPPS)		•	•
	Negative pressure side wall plenums		•	•
	All metal plenums		•	•
	Performance Factor/SmartFlow Indicator		•	•
	One-piece indented work tray		•	
	Cross-beam UV disinfection system		•	
	SampleGuard aerosol-tight sealing window frame		•	
Comfort	Low noise level		•	•
	10° sloped front		•	•
	Bright workspace		•	•
	Side glass walls		•	
Convenience	Programmable UV light		•	•
	Eye-level control panel/display		•	
	SmartClean Plus hinging window		•	
	SmartClean window cleaning			•
	SmartPort tubing/cable organizer			•
	Motorized front sash		•	
	316 stainless steel interior		•	
Efficiency	Energy efficient DC motors		•	•
	Night Set-Back mode (reduces energy)		•	•
	Extended motor life (>100,000 hours)		•	•
	8 inch window option			•

© 2012 Thermo Fisher Scientific Inc. All rights reserved. All trademarks are the property of Thermo Fisher Scientific Inc. and its subsidiaries. Specifications, terms and pricing are subject to change. Not all products are available in all countries. Please consult your local sales representative for details.



For customer service, call 1-800-2-FISHER (1-800-234-7437)
 To fax an order, use 1-800-463-2996
 To order online: www.fishersci.ca

For customer service, call 1-800-766-7000.
 To fax an order, use 1-800-926-1166.
 To order online: www.fishersci.com



Part of Thermo Fisher Scientific