

R&D Systems

Now Available Through

Fisher Scientific

R&D SYSTEMS HIGH-QUALITY
REAGENTS NOW AVAILABLE
THROUGH FISHER SCIENTIFIC

Fisher Scientific has enhanced their life science portfolio with the addition of the R&D Systems product lines, including Tocris Bioscience and Boston Biochem.

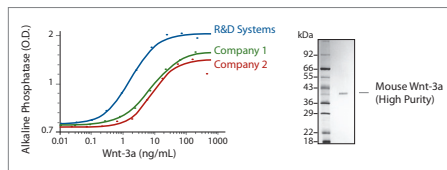
A leading supplier of cell biology reagents with over 25 years of experience serving the research community, R&D Systems develops and manufactures more than 95% of their products. All materials are controlled to ensure that R&D Systems meets the standards vital to delivering the highest quality products.

Areas of Research Covered:

- Cancer
- Cytokines and Growth Factors
- Developmental Biology
- Endocrinology
- Glycobiology
- Immunology
- Neuroscience
- Proteases and Other Enzymes
- Signal Transduction
- Stem Cells
- Ubiquitin, Related Modifiers, and Pathways



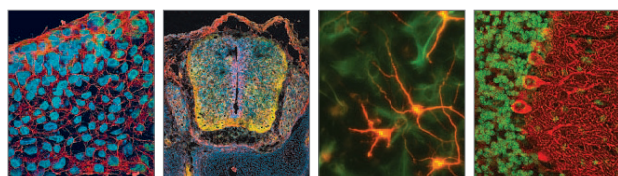
R&D Systems Key Product Lines:



Recombinant and Natural Bioactive Proteins

– *the industry leading supplier*

- Tested with relevant bioassays to demonstrate biological activity
- Refolded properly
- Confirmed high purity
- Consistent from lot-to-lot
- Contain low endotoxin levels
- Also available as Animal-Free and GMP-grade



Application Qualified Antibodies

– *from the leading supplier of proteins, over 10,000 antibodies*

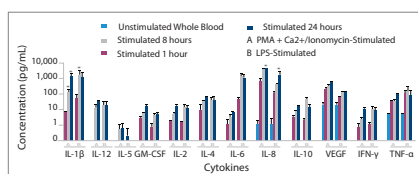
- Raised against mature, full-length, and biologically-active proteins.
- Manufactured in R&D Systems laboratories.
- Validated by R&D Systems scientists for up to ten applications
- Conjugated to an extensive selection of fluorochromes and non-fluorescent labels



Quantikine® ELISAs

– *the gold standard in biomarker discovery*

- The most referenced ELISAs
- Tested extensively for cross-reactivity
- Provides accuracy, sensitivity, and specificity
- Consistent from lot-to-lot
- Manufactured at R&D Systems for full-control over development and quality control



Luminex® Performance and Screening Assays

– *from the world leader in immunoassay development*

Performance Assay:

- All analytes in a given panel are optimized and tested together to ensure maximum performance for the entire panel
- Kits undergo similar validation testing and are correlated with the Quantikine ELISA

Screening Assay:

- Up to 100 human and 40 mouse analytes can be simultaneously profiled for ultimate flexibility
- The most cost-effective assay for profiling multiple markers
- The menu of analytes is rapidly expanding

TOCRIS
b i o s c i e n c e

Tocris is a high-quality provider of biologically active small molecules. They offer a unique collection of over 3,000 life science biological research products with strengths in neuroscience and cell signaling. The product range comprises small molecule and peptide agonists, antagonists, and inhibitors, as well as controlled substances, toxins, caged compounds, fluorescent probes, screening libraries, and ligand sets useful in many research areas.

KEY POINTS: High purity, extensive solubility information, competitive pricing, respect for third-party intellectual property

In U.S.: www.fishersci.com/rndsystems
In Canada: www.fishersci.ca/rndsystems

© 2014 Thermo Fisher Scientific Inc. All rights reserved.
Trademarks used are owned as indicated at www.fishersci.com/trademarks.

In the United States:

For customer service, call 1-800-766-7000
To fax an order, use 1-800-926-1166
To order online: www.fishersci.com

13_1965 JA/JC 01/14 BN01141414

In Canada:

For customer service, call 1-800-234-7437
To fax an order, use 1-800-463-2996
To order online: www.fishersci.ca

BostonBiochem®

Boston Biochem, Inc. is the leading global producer of ubiquitin-related research products. Boston Biochem specializes in several related product lines for ubiquitin and ubiquitin-like (UBL) proteins (e.g. Apg8, FAT10, ISG15, NEDD8, SUMO, UFM1) and associated enzymes, substrates, inhibitors and kits.

KEY POINTS: The most comprehensive ubiquitin-related product range, unique content for UPP research not available from any other source

Fisher Scientific

Part of Thermo Fisher Scientific