

Fisher Scientific

Rockers, Rotators and Shakers

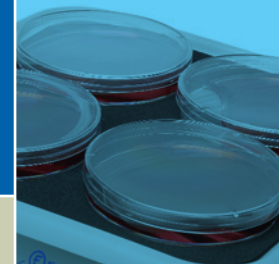




# Introducing Fisher Scientific Rockers, Rotators and Shakers

*We offer a comprehensive range of efficient and sturdy rocking, rotating and shaking equipment for a variety of mixing applications including life science, cell culture, chemistry and other analytical or research laboratories.*

- Platform rockers
- 3D platform rotators
- 3D multi-function rotators
- 3D multi-platform shakers
- Orbital microplate shakers



### Fisher Scientific Platform Rockers

*Compact, highly functional fixed-angle rockers provide smooth rocking action for gentle sample agitation.*

- » Ideal for tubes, culture flasks, dishes and boxes
- » Simple graduated speed setting from 7.5 to 30rpm
- » Continuous or timed operation with automatic switch-off, ensures accurate countdown for repeatability of time sensitive incubations
- » Large, easy-to-read LED display
- » Fits neatly into the smallest workspace
- » Smooth, non-slip mat prevents vessels from slipping
- » Operating temperature range of 4 to 40°C allows for use in cold rooms or incubators



Optional dimpled mat  
(Cat. No. 13687706)

Fixed-Tilt Platform Rockers	Cat. No. 13687704
Speed (rpm)	7.5 to 30
Tilt angle ( ° )	7
Timer, with automatic switch-off	1 min to 24 hours
Platform dimensions (working area) (in)	8.19 x 8.19
Maximum load (lb)	1.1
Display	4 digit LED
Input voltage (V dc)	12
Input current ( A)	0.5

Accessories for Fixed-Tilt Rockers	Cat. No.
Dimpled mat: 7.8 x 7.8 in	optional 13687706

### Applications

- Gel staining/destaining
- Washes
- Antibody staining
- Hybridizations
- Immuno precipitations
- Southern blots
- Western blots
- in situ*

# Fisher Scientific Rockers, Rotators and Shakers

## Fixed-Tilt Rotators

### Fisher Scientific 3D Platform Rotators

*Variable speed, fixed-angle 3D rotators provide smooth orbital motion for mixing in culture flasks, dishes, boxes and tubes.*

- » Simple speed adjustment from 5 to 60rpm
- » Gentle movement ideal for staining gels without destroying the edges or keeping fragile tissue intact during incubation
- » Large platform accommodates most commonly used vessels with non-slip mat that prevents slipping
- » Low voltage power supply provides safe cold room operation and low energy consumption
- » Operating temperature range of 4 to 40°C allows for use in cold rooms or incubators

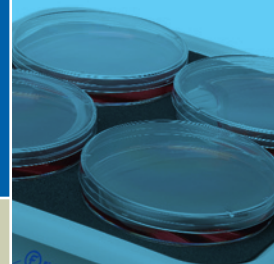


Fixed-Tilt Platform Rotators	Cat. No. 13687705
Speed (rpm)	5 to 60
Tilt angle ( ° )	7
Platform dimensions (working area) (in)	8.19 x 8.19
Maximum load (lb)	1.1
Input voltage (V dc)	12
Input current ( A )	0.5

Accessories for Fixed-Tilt Rotators	Cat. No.
Dimpled mat: 7.8 x 7.8 in	optional 13687706

### Applications

Gel staining/destaining  
Washes  
Antibody staining  
Hybridizations  
Immuno precipitations  
Southern blots  
Western blots  
*in situ*



### Fisher Scientific Multi-Function 3D Rotators

*Variable speed, fixed angle, multi-function 3D rotators fully optimize the mixing of different sized particles.*

- » 3D rotation, reciprocation and vibration functions allow for continuous operation, timed operation or different combinations to ensure optimal mixing conditions for any application
- » Rotation speed: 5 to 30rpm for long wave motion
- » Reciprocal rotation: 1 to 360° turning angle for long and medium way motion
- » Vibration: 1 to 6° turning angle, programmable in bursts of 1 to 5 seconds, for short wave motion
- » Fits neatly into small workspaces
- » Operating temperature range of 4 to 40°C allows for use in cold rooms or incubators



Multi-Function 3D Rotators	Cat. No. 13687707
Speed (rpm)	5 to 30
Turning angle (reciprocal mode) (°)	1 to 360
Turning angle (vibration mode) (°)	1 to 5
Tilt angle (°)	7
Orbit diameter (in)	0.9
Timer (orbital/360° vertical or reciprocal mode) (sec)	1 to 250
Timer (vibration mode) (sec)	1 to 5
Number of cycles	1 to 125
Platform dimensions (working area) (in)	8.19 x 8.19
Maximum load (lbs)	2.2
Display	2 x 16 character LCD
Input voltage (V dc)	12
Input current (A)	0.5

Accessories for Multi-Function Rotators	Cat. No.
Dimpled mat: 7.8 x 7.8 in	optional 13687706

### Applications

- Immuno precipitations
- Affinity matrix
- Trypsinisation
- Gel staining and destaining
- Antibody staining
- Washes
- Hybridizations
- Southern blots
- Western blots
- in situ*



# Fisher Scientific Rockers, Rotators and Shakers

## Multi-Platform Shakers

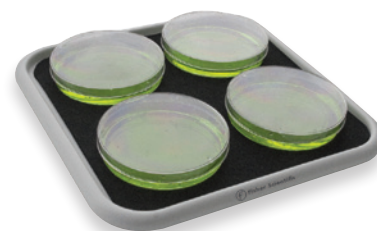
### Fisher Scientific Multi-Platform Shakers

*Easy to use, microprocessor controlled shaking platform provides a smooth, quiet horizontal orbital motion for mixing in bottles, flasks and beakers.*

- » Variable shaking speed: 50 to 450rpm
- » Holds up to 8.8lbs
- » Automatic load balancing system
- » Continuous or timed operation with automatic switch-off
- » Maximum flexibility with an option of four interchangeable platforms
- » Simple set up and easy to operate
- » Low voltage power supply provides for safe cold room operation and low energy consumption
- » Operating temperature range of 4 to 40°C allows for use in cold rooms or incubators



Multi-platform shaker fitted with optional universal platform with adjustable bars (Cat. No. 13687710)



Optional platform with non-slip rubber mat (Cat. No. 13687701)

#### Multi-Platform Shakers\* (Platform not included. Order separately)

**Cat. No. 13687700**

Speed (rpm)	50 to 450
Orbit (in)	.4
Maximum load (lb)	8.8
Timer, with automatic switch-off	1 min to 96 hours
Display	2-line 16 character LCD
Input voltage (V dc)	12
Input current (A)	1
Ambient temperature range (°C)	4 to 40

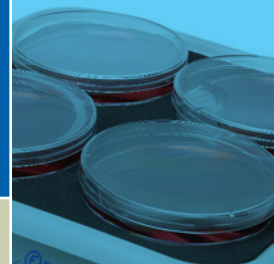
#### Accessories for Multi-Platform Shakers

**Cat. No.**

Flat platform with non-slip rubber mat. Dimensions: 9 x 9 in	optional	<b>13687701</b>
Platform with clamps for 6 x 250 flasks/150ml beakers. Dimensions: 9.75 x 7.4 in	optional	<b>13687702</b>
Platform with clamps for 12 x 100ml flasks/150ml beakers. Dimensions: 9.75 x 7.4 in	optional	<b>13687703</b>
Universal platform with adjustable bars. Dimensions: 13.4 x 16.8 x 4.1 in	optional	<b>13687710</b>

### Applications

- Biomedical or biopharmaceutical labs
- Cultivations of cells
- Extracting
- Dissolving slow reacting samples
- Tissue culture of analytical diagnostics
- Rotating closed containers for dialysis
- Bacterial growth



### Fisher Scientific Microplate Shakers

*Compact, variable speed horizontal shaker for reliable and regulated shaking of two or four microplates.*

- » Variable shaking speed: 150 to 1000rpm
- » Quick and easy fitting for any standard-depth multiwall plates
- » Continuous or timed operation, with automatic switch off
- » Operating temperature 4 to 40°C allows for use in cold rooms or incubators
- » Holds two or four microplates
- » Easy-to-use electronic timer ensures accurate countdown and repeatability of time sensitive incubations



#### Microplate Shakers\*

Cat. No. 13687708

Speed (rpm)	150 to 1000
Orbit (in)	.1
Capacity	2 microplates
Timer, with automatic switch-off	1 min to 23 h 59 min
Display	4 digit LED
Input voltage (V dc)	12
Input current (A)	0.5
Ambient temperature range (°C)	4 to 40

#### Accessories for Microplate Shakers

Cat. No.

Four plate platform: 6.6 x 10.3 in	optional	13687709
------------------------------------	----------	----------

### Applications

#### Life Science

- Immunoassay
- Shaking ELISA plates
- Staining cells for flow cytometry
- Shaking plates in cold room

#### Food and Beverage

- Histamine in cheese
- Vitamins in milk testing

\*All heights exclude platform

Fisher Scientific

Rockers, Rotators and Shakers



For customer service, call 1-800-766-7000.  
To fax an order, use 1-800-926-1166.  
To order online: [www.fishersci.com](http://www.fishersci.com)