



**Fisher Scientific**

# **GSA Contract GS-07F-161BA**

*Effective through 3/23/19*



**Your GSA source for the most  
Thermo Scientific products...anywhere.**



## Let Fisher Scientific's GSA Contract Be Your One Source for Thermo Scientific Products

Find thousands of products that you have come to know and trust.

We offer lab supplies, consumables, reagents, instruments and equipment for all your life science and analytical applications.

I-CHEM™  
National Scientific™  
SUN SRI™  
Thermo Scientific™ ABgene™  
Thermo Scientific™ Anatomical  
Pathology  
Thermo Scientific™ Forma™  
Thermo Scientific™ Hamilton™  
Thermo Scientific™ Heracell™

Thermo Scientific™ HyClone™  
Thermo Scientific™ Hypersil™  
Thermo Scientific™ Labsystems  
LH™  
Thermo Scientific™ MBP™  
Thermo Scientific™ Nalgene™  
Thermo Scientific™ NanoDrop™  
Thermo Scientific™ Napco™  
Thermo Scientific™ Neslab

Thermo Scientific™ Nunc™  
Thermo Scientific™ Orion™  
Thermo Scientific™ Owl  
Thermo Scientific™ Particle  
Technologies™  
Thermo Scientific™ Pierce™  
Thermo Scientific™ Remel™  
(FSS-V797P-5992X)  
Thermo Scientific™ Revco™  
Thermo Scientific™ Sorvall™

### Didn't see a specific product or want to learn more?

For a complete list of GSA products, visit the GSA Advantage website at [www.GSAAdvantage.gov](http://www.GSAAdvantage.gov) or [fishersci.com](http://fishersci.com).

# GS-07F-161BA

View all products at  
*fishersci.com* or *GSAAdvantage.gov*

## Fisher Scientific—Life Science Products

	GSA Product Line
Thermo Scientific ABgene	Life Science Research
Thermo Scientific Pierce	Antibodies
Thermo Scientific HyClone	Life Science Research
Thermo Scientific Remel	Microbiology



**AB4162B**

**ABsolute™ Blue Master Mix**



**AB1178**

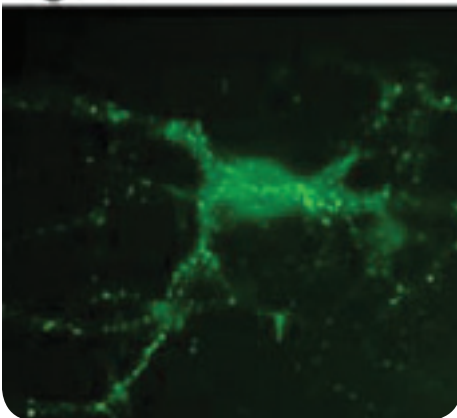
**384-Well Storage Plate**

### Thermo Scientific ABgene

**Plastic-disposable PCR plates, tubes, seals, accessories, PCR and qPCR reagents, Taq, PCR kits and Master Mixes**

- Complete line of Absolute Blue qPCR reagents, Thermo-Start Taq Reddymix and ABgene Diamond Ultra 384-well PCR plates

Fig. 1



**MA104**

**Pierce Antibodies**

### Thermo Scientific Pierce

**Primary and secondary antibodies, kinases and peptides**

- More than 1000 antibodies supporting research in oncology, signal transduction, stem cell and many others



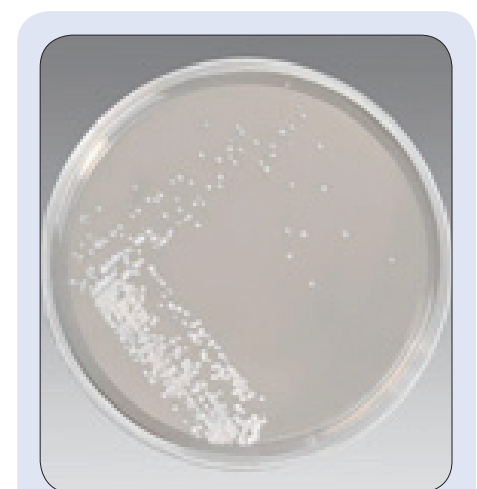
**SH3007003**

**Fetal Bovine Serum**

### Thermo Scientific HyClone

**Biologicals, fetal bovine serum and cell culture media**

- Media, serum and reagents for all your life science and cell biology needs



**R01768**

**Prepared Media**

### Thermo Scientific Remel

**Microbiology products**

- Culture Preparation

**Found on FSS V797P-5992X**

	<i>GSA Product Line</i>
<b>Thermo Scientific Revco</b>	Controlled Environment
<b>Thermo Scientific Forma and Heracell</b>	Controlled Environment

View all products at [fishersci.com](http://fishersci.com) or [GSAAdvantage.gov](http://GSAAdvantage.gov)

## Thermo Scientific Revco

- Upright ultra-low freezers
- Upright high performance lab refrigerators and freezers
- Chest freezers
- Chromatography and pharmacy refrigerators
- Flammable and explosion-proof refrigerators



For a detailed description go to page 13.

13-989-230

**Revco Ultima Plus HD**



13-989-723

**Revco Value Plus**



13-990-426

**Chest Freezer**

## Thermo Scientific Forma and Heracell

- Upright ultra-low freezers, chest freezers, Napco and Heracell CO<sub>2</sub> incubators



For a detailed description go to page 12.

15-474-330

**Forma Elite**



13-998-033

**Heracell CO<sub>2</sub> Incubator**

# GS-07F-161BA

View all products at  
*fishersci.com* or *GSAAdvantage.gov*

<b>Fisher Scientific—Laboratory Products (Equipment)</b>	
	<b>GSA Product Line</b>
<b>Thermo Scientific Centrifugation</b>	Sample Preparation and Separation
<b>Thermo Scientific Owl</b>	Sample Preparation and Separation
<b>Thermo Scientific Neslab</b>	Temperature Control

## Thermo Scientific Centrifugation

### **Centrifuge, microcentrifuge, rotors and accessories**

- Get the Thermo Scientific Sorvall Legend™ ST 16, ST 40, Primo and Stratos Models



For a detailed description go to page 15.

75-004-506

Sorvall Legend XT



75-004-510

Sorvall ST40



75-004-221

Sorvall Legend X1



75-004-241

Sorvall ST16

## Thermo Scientific Neslab

### **Recirculating chillers**

- Ease of use and superior performance



13-266-130

Thermo Flex

## Thermo Scientific Owl

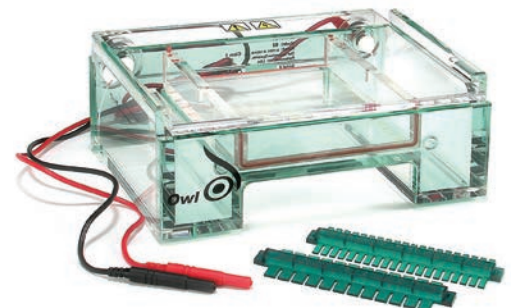
### **Horizontal and vertical gel boxes and accessories**

- For all your electrophoresis needs



OWP8DS-2

Owl Dual Gel



09-528-110B

Owl EasyCast Minigel

**Fisher Scientific—Laboratory Products (Consumables)**

	<i>GSA Product Line</i>
<b>Thermo Scientific Nalgene</b>	Labware and Specialty Products
<b>Thermo Scientific Nunc</b>	Labware and Specialty Products
<b>I-CHEM</b>	Glass and Specialty Consumables
<b>Thermo Scientific MBP</b>	Liquid Handling Consumables

# GS-07F-161BA

View all products at  
*fishersci.com or GSAAdvantage.gov*

## Thermo Scientific Nalgene

**Laboratory consumables: bottles, test tubes, filtration caps, vials, carboys and much more**

- Find thousands of products from this famous brand of plastic labware



09-741-03

**Sterile Filter Unit**



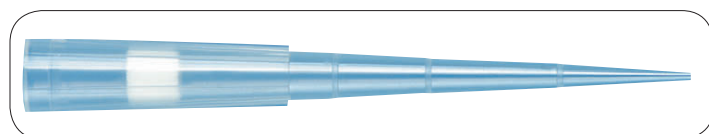
09-740-30D

**Filter Funnels**

## Thermo Scientific MBP

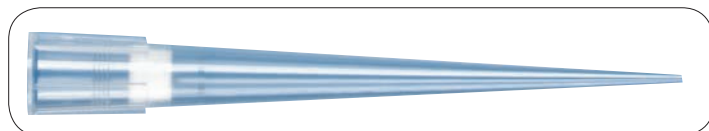
**Liquid handling consumables: tips and caps**

- Art barrier tips



21-236-1

**Art Barrier Tips**



21-403-00

**Art Barrier Tips**

## Thermo Scientific Nunc

**Laboratory consumables: vials, microplates, Petri dishes, flasks and much more**

- Consumables for all your cell culture and life science needs



12-565-99

**Petri Dishes**



12-565-802

**EZ Flip Centrifuge Tubes**

## I-CHEM

**Sterile, nonsterile and pre-cleaned vials and other laboratory bottles, jugs and jars**

- Find your sterile glassware and other consumables here



05-719-106

**Vials**



05-719-91

**Amber Glass Bottles**

# GS-07F-161BA

Fisher Scientific—Laboratory Products (Consumables)	
	GSA Product Line
Thermo Scientific Hypersil	Chromatography Consumables
National Scientific	Chromatography Consumables
SUN SRI	Chromatography Consumables
Thermo Scientific Labsystem LH	Liquid Handling Consumables

View all products at [fishersci.com](http://fishersci.com) or [GSAAdvantage.gov](http://GSAAdvantage.gov)

## Thermo Scientific Hypersil

### Chromatography columns

- Thousands of columns for every chromatography application



03-050-152

HPLC Columns



25002-052130

HPLC Columns

## Thermo Scientific Labsystems LH

### Liquid handling pipettes and tips

- Finn pipettes and Finntip brands



21-377-016

Finn pipette Novus Pipetter



21-377-126

Finntip Pipet Tips

## National Scientific

### Caps and autosampler vials

- Vials with features that apply to your specific needs



06-406-19B

Crimp Seals



03-375-3CC

Vials

## SUN SRI

### Syringe filters, autosampler vials and much more

- Find unique chromatography consumables



14-823-249

MicroMat Sealing Mats



14-823-296

Syringe Filters

	GSA Product Line
Thermo Scientific NanoDrop	Spectroscopy
Thermo Scientific Spectroscopy	Spectroscopy

View all products at  
[fishersci.com](http://fishersci.com) or [GSAAdvantage.gov](http://GSAAdvantage.gov)

## Thermo Scientific NanoDrop

### Full-spectrum, UV-VIS spectrophotometers

- Complete line of NanoDrop products



ND-2000

ND-2000C

NanoDrop 2000



ND-8000

NanoDrop 8000



ND-3300

NanoDrop Fluorospectrometer

## Thermo Scientific Spectroscopy

### Spectrophotometers, colorimeters and accessories

- Ideal for teaching labs, QC applications or environmental testing



14-385-445

Genesys Spectrophotometer



14-385-130

20+/20D+ Spectrophotometer



14-386-406

Evolution Spectrophotometer



# GS-07F-161BA

View all products at  
[fishersci.com](http://fishersci.com) or [GSAAdvantage.gov](http://GSAAdvantage.gov)

## Fisher Scientific—Analytical Instruments

	GSA Product Line
Thermo Scientific Orion	Water Analysis
Thermo Scientific Electrochemistry	Water Analysis
Thermo Scientific Anatomical Pathology	Anatomical Pathology

### Thermo Scientific Orion

#### ***pH Meters and electrodes for routine pH and titration measurements***

- Complete line of pH meters from the Thermo Scientific Orion name



13-644-958

Orion pH Meter



13-642-243

Orion Electrode

### Thermo Scientific Electrochemistry

#### ***Temperature controllers and pH electrodes***

- Find unique offering of lab accessories and apparatus



15-176-110

Digi-Sense Temperature Controller

### Thermo Scientific Anatomical Pathology

#### ***Microtomes, cryostats and accessories, stains and dyes, histology and diagnostic supplies and chemicals***

- Unique products for histology and diagnostic applications



23-900-672

Rotary Microtome



B81300003

Slidemate Printer



22-050-328

Cryostat

	GSA Product Line
Thermo Scientific Hamilton	Laboratory Workstations
Thermo Scientific Particle Technologies	Process Particles

View all products at [fishersci.com](http://fishersci.com) or [GSAAdvantage.gov](http://GSAAdvantage.gov)

## Thermo Scientific Hamilton

### Fume hoods and laboratory furniture

- Find your furniture needs from the Thermo Scientific Hamilton line



HM718H8330B

Wall Cabinets



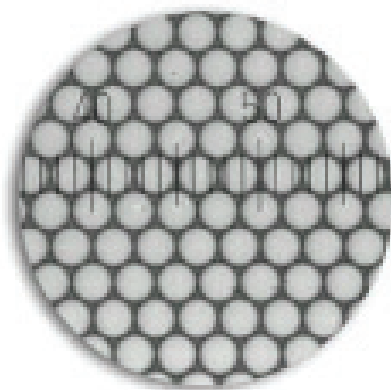
HMLAB027

SafeAire II Fume Hood

## Thermo Scientific Particle Technologies

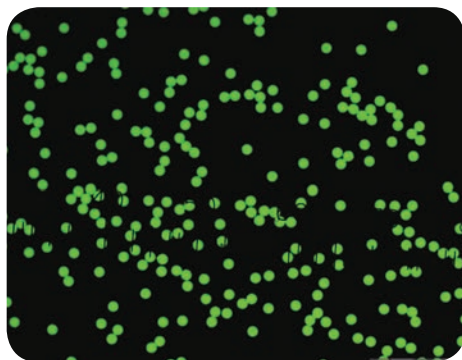
### Monosized particles and magnetic SpeedBeads™

- Unique products for particle counting and colony counting



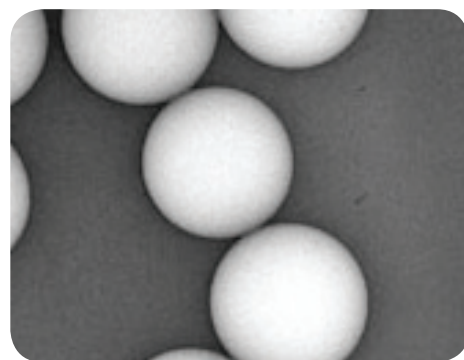
09-980-054

4000 Series Monosized Particles



09-980-406

Microspheres



09-980-217

Precision Standards

# GS-07F-161BA

View all products at  
*fishersci.com* or *GSAAdvantage.gov*

## REFRIGERATORS

Model/Series	Fisher Scientific Item#	Thermo Scientific Item#	Voltage (Hz)	Temp. Range	Cabinet	Cu. Ft. (L)	Ext. Dimensions H x D x W
<b>Chromatography Refrigerators</b>							
Revco High Performance	22245957	REC2304A	115 (60)	+1°C to +8°C	Upright	23.3 (659)	79.2 x 36.4 x 28.0" (2012 x 925 x 711mm)
	13989231	REC2304D	208/230 (60)				
Revco High Performance	13991136	REC3004A	115 (60)	+1°C to +8°C	Upright	29.2 (826)	79.2 x 36.4 x 34.0" (2012 x 925 x 864mm)
	13991137	REC3004D	208/230 (60)				
Revco Value	13990317	RCR4304A	120 (60)	+2°C to +10°C	Upright	43.0 (1218)	76.2 x 31.7 x 37.2" (194 x 81 x 94cm)
Revco High Performance	13991142	REC4504A	115 (60)	+1°C to +8°C	Upright	45.8 (1297)	79.1 x 34.5 x 56.5" (2010 x 876 x 1435mm)
	13991143	REC4504D	208/230 (60)				
Revco High Performance	1399017A	REC5004A	115 (60)	+1°C to +8°C	Upright	51.1 (1447)	79.2 x 36.4 x 56.5" (2012 x 925 x 1435mm)
	1399017B	REC5004D	208/230 (60)				
Revco High Performance	1399185	REC7504A	115 (60)	+1°C to +8°C	Upright	78.8 (2231)	79.2 x 36.4 x 85.0" (2012 x 925 x 2159mm)
	1399186	REC7504D	208/230 (60)				
<b>Blood Bank Refrigerators</b>							
Revco	13990260	REB404A	115 (60)	+1°C to +8°C	Undercounter	4.9 (48)	34.0 x 28.9 x 24.0" (864 x 734 x 610mm)
Revco	22266177	REB1204A	115 (60)	+1°C to +8°C	Space Saver	11.5 (120)	73.6 x 29.5 x 24.0" (1869 x 749 x 610mm)
Revco	1399060	REB2304A	115 (60)	+1°C to +8°C	Upright	23.3 (288)	79.2 x 36.4 x 28.0" (2012 x 925 x 711mm)
Revco	13991121	REB3004A	115 (60)	+1°C to +8°C	Upright	29.2 (360)	79.2 x 36.4 x 34.0" (2012 x 925 x 864mm)
Revco	1399054	REB5004A	115 (60)	+1°C to +8°C	Upright	51.1 (576)	79.2 x 36.4 x 56.5" (2012 x 925 x 1435mm)
	1399063	REB5004D	208/230 (60)				
<b>Pharmacy Refrigerators</b>							
Revco	13991202	RPR1204A	115 (60)	+1°C to +8°C	Upright	11.5 (326)	73.6 x 29.5 x 24.0" (1869 x 749 x 610mm)
	13991203	RPR1204D	208/230 (60)				
Revco	13991200	RPR2304A	115 (60)	+1°C to +8°C	Upright	23.3 (659)	79.2 x 36.4 x 28.0" (2012 x 925 x 711mm)
	13991201	RPR2304D	208/230 (60)				
Revco	13991134	RPR3004D	208/230 (60)	+1°C to +8°C	Upright	29.2 (826)	79.2 x 36.4 x 34.0" (2012 x 925 x 864mm)
Revco	13991204	RPR5004A	115 (60)	+1°C to +8°C	Upright	51.1 (1447)	79.2 x 36.4 x 56.5" (2012 x 925 x 1435mm)
	13991205	RPR5004D	208/230 (60)				
<b>General Laboratory Refrigerators</b>							
Revco High Performance	13990156	REL404A	115 (60)	+1°C to +8°C	Undercounter	4.9 (133)	34.0 x 28.9 x 24.0" (864 x 734 x 610mm)
Revco High Performance	1399189	REL1204A	115 (60)	+1°C to +8°C	Space Saver	11.5 (326)	73.6 x 30.0 x 24.0" (1869 x 762 x 610mm)
Revco High Performance	1399152	REL2304A	115 (60)	+1°C to +8°C	Upright	23.3 (659)	79.2 x 37.2 x 28.0" (2012 x 945 x 711mm)
	1399111	REL2304D	208/230 (60)				
Revco High Performance	13991130	REL3004A	115 (60)	+1°C to +8°C	Upright	29.2 (826)	79.2 x 37.2 x 34.0" (2012 x 945 x 864mm)
	13991131	REL3004D	208/230 (60)				
Revco High Performance	13991139	REL4504A	115 (60)	+1°C to +8°C	Upright	45.8 (1297)	79.1 x 34.5 x 56.5" (2010 x 876 x 1435mm)
	13991140	REL4504D	208/230 (60)				
Revco High Performance	1399153	REL5004A	115 (60)	+1°C to +8°C	Upright	51.1 (1447)	79.2 x 37.2 x 56.5" (2012 x 945 x 1435mm)
	139912	REL5004D	208/230 (60)				
Revco High Performance	139913	REL7504A	115 (60)	+1°C to +8°C	Upright	78.8 (2231)	79.2 x 37.2 x 85.0" (2012 x 945 x 2159mm)
	139914	REL7504D	208/230 (60)				
<b>Laboratory Refrigerators/Freezers</b>							
Revco Explosion-Proof	13990336	RXP54A	115 (60)	+2°C to +10°C -12°C to -18°C	Undercounter	4.7 (133) 1.3 (37)	33.33 x 29 x 21.33" (84.6 x 73.7 x 54.2cm)
Revco	1399190	RCRF252A	120 (60)	+2°C to +10°C -12°C to -18°C	Upright	8.6 (244) 7.1 (201)	66.62 x 33.62 x 36.0" (174 x 85 x 91cm)
Revco	13990118	RCRF192A	120 (60)	+2°C to +10°C -12°C to -18°C	Upright	17.5 (496) 5.4 (152)	67.25 x 30.88 x 29.62" (171 x 78 x 75cm)

# GS-07F-161BA

View all products at  
*fishersci.com or GSAAdvantage.gov*

## FREEZERS

Model/Series	Fisher Scientific Item#	Thermo Scientific Item#	Voltage (Hz)	Temp. Range	Cabinet	Cu. Ft. (L)	Ext. Dimensions H x D x W
<b>Laboratory Freezers</b>							
Revco High Performance	13990266	ULT430A	115 (60)	-30°C	Undercounter	4.9 (133)	34.0 x 28.9 x 24.0" (864 x 734 x 610mm)
Revco General Purpose	13990531	REF417A	115 (60)	-12°C to -20°C	Undercounter	5.0 (141)	34.0 x 21.0 x 27.0" (85.1 x 54.0 x 67.3cm)
Revco General Purpose	13990530	RLR065A	115 (60)	+2°C to +10°C	Undercounter	7.0	34 x 24 x 24" (86.7 x 61 x 61cm)
Revco Slimline	1398671	ULT11863SIA	120 (60)	-50°C to -86°C	Upright	11.0 (311)	75.5 x 37 x 26.5" (190 x 94 x 67cm)
	1398672	ULT11863SID	208/230 (60)				
Revco High Performance	22285655	ULT1230A	115 (60)	-30C	Space Saver	11.5 (326)	73.6 x 30.0 x 24.0" (1869 x 762 x 610mm)
Forma 8600	15474354	8691	230 (60)	-50°C to -86°C	Upright	13.0 (368.1)	77.8 x 31.0 x 33.3" (1976 x 787 x 846mm)
	15474355	8692	120 (60)				
	15474342	8602	230 (60)				
	15474343	8603	120 (60)				
Forma 900	15474336	991	230 (60)	-50°C to -86°C	Upright	13.0 (368.1)	77.8 x 31.0 x 33.3" (1976 x 787 x 846mm)
	15474337	992	120 (60)				
	15474329	902	230 (60)				
	15474330	903	120 (60)				
Forma 700	11700368	702	230 (60)	-50°C to -86°C	Upright	13.0 (368.1)	77.8 x 31.0 x 33.3" (1976 x 787 x 846mm)
	11700367	703	120 (60)				
Revco Value	1398958	ULT13403A	120 (60)	-10°C to -40°C	Upright	13.4 (379)	77.5 x 31.33 x 37" (197 x 80 x 94cm)
Revco Value	1398996	ULT13863A	120 (60)	-50°C to -86°C	Upright	13.4 (379)	77.5 x 31.33 x 37" (197 x 80 x 94cm)
	1398997	ULT13863D	208/230 (60)				
Revco Elite	13989103	ULT13405A	115 (60)	-10°C to -40°C	Upright	13.4 (379)	77.5 x 31.33 x 37" (197 x 80 x 94cm)
Revco Elite	13989141	ULT13865A	115 (60)	-50°C to -86°C	Upright	13.4 (379)	77.5 x 31.33 x 37" (197 x 80 x 94cm)
	13989142	ULT13865D	208/203 (60)				
Revco Ultima II	13990252	ULT13409A	120 (60)	-10°C to -40°C	Upright	13.4 (379)	77.5 x 31.33 x 37" (197 x 80 x 94cm)
Revco Ultima II	13990177	ULT13869A	120 (60)	-50°C to -86°C	Upright	13.4 (379)	77.5 x 31.33 x 37" (197 x 80 x 94cm)
	13990178	ULT13869D	208/203 (60)				
Revco Ultima Plus	13989717	ULT178610A	115 (60)	-50°C to -86°C	Upright	17.2 (487)	77.8 x 35.5 x 36.7" (1975 x 901 x 931mm)
	13989718	ULT178610D	208/203 (60)				
Revco Elite Plus	13989704	ULT17866A	115 (60)	-50°C to -86°C	Upright	17.2 (487)	77.8 x 35.5 x 36.7" (1975 x 901 x 931mm)
	13989705	ULT17866D	208/203 (60)				
Revco Value Plus	13989723	ULT17864A	115 (60)	-50°C to -86°C	Upright	17.2 (487)	77.8 x 35.5 x 36.7" (1975 x 901 x 931mm)
	13989724	ULT17864D	208/203 (60)				
Forma 8600	15474356	8693	120 (60)	-50°C to -86°C	Upright	17.3 (489.9)	77.8 x 37.0 x 33.3" (1976 x 940 x 846mm)
	15474357	8694	230 (60)				
	15474344	8604	120 (60)				
	15474345	8605	230 (60)				
Forma 900	15474338	993	120 (60)	-50°C to -86°C	Upright	17.3 (489.9)	77.8 x 37.0 x 33.3" (1976 x 940 x 846mm)
	15474339	994	230 (60)				
	15474331	904	120 (60)				
	15474332	905	230 (60)				
Forma 700	11700369	704	120 (60)	-50°C to -86°C	Upright	17.3 (489.9)	77.8 x 37.0 x 33.3" (1976 x 940 x 846mm)
	11700370	705	230 (60)				
Revco Value	1398960	ULT17403A	120 (60)	-10°C to -40°C	Upright	17.4 (493)	77.5 x 36.88 x 37" (197 x 93 x 94cm)
Revco Elite	13989105	ULT17405A	115 (60)	-10°C to -40°C	Upright	17.4 (493)	77.5 x 36.88 x 37" (197 x 93 x 94cm)
	13989168	ULT17405D	208/230 (60)				
Revco Ultima II	13990254	ULT17409A	115 (60)	-10°C to -40°C	Upright	17.4 (493)	77.5 x 36.88 x 37" (197 x 93 x 94cm)

# GS-07F-161BA

View all products at  
[fishersci.com](http://fishersci.com) or [GSAAdvantage.gov](http://GSAAdvantage.gov)

## FREEZERS

Model/Series	Fisher Scientific Item#	Thermo Scientific Item#	Voltage (Hz)	Temp. Range	Cabinet	Cu. Ft. (L)	Ext. Dimensions H x D x W
<b>Laboratory Freezers</b>							
Revco Ultima Plus	13989719	ULT218610A	115 (60)	-50°C to -86°C	Upright	20.2 (572)	77.8 x 36.2 x 41.7" (1975 x 920 x 1058mm)
	13989720	ULT218610D	208/203 (60)				
Revco Elite Plus	13989706	ULT21866A	115 (60)	-50°C to -86°C	Upright	20.2 (572)	77.8 x 36.2 x 41.7" (1975 x 920 x 1058mm)
	13989707	ULT21866D	208/203 (60)				
Revco Value Plus	13989702	ULT21864A	115 (60)	-50°C to -86°C	Upright	20.2 (572)	77.8 x 36.2 x 41.7" (1975 x 920 x 1058mm)
	13989703	ULT21864D	208/203 (60)				
Revco Value	1398962	ULT21403A	120 (60)	-10°C to -40°C	Upright	20.2 (572)	77.5 x 36 x 42.25" (197 x 92 x 107cm)
Revco Ultima II	13990256	ULT21409A	120 (60)	-10°C to -40°C	Upright	20.2 (572)	77.5 x 36 x 42.25" (197 x 92 x 107cm)
	13990257	ULT21409D	208/230 (60)				
Revco Elite	22275132	ULT21405A	115 (60)	-10°C to -40°C	Upright	20.2 (572)	77.5 x 36 x 42.25" (197 x 92 x 107cm)
Revco General Purpose	13990328	RLR2111A	115 (60)	+2°C to +10°C	Upright	20.7	70.25 x 28.5 x 32" (178 x 72 x 81cm)
Forma 8600	15474353	8690	120 (60)	-50°C to -86°C	Upright	23.0 (651.3)	77.8 x 37.0 x 40.8" (1976 x 940 x 1036mm)
	15474358	8695	230 (60)				
	15474346	8606	230 (60)				
	15474352	8656	120 (60)				
Forma 900	15474333	906	120 (60)	-50°C to -86°C	Upright	23.0 (651.3)	77.8 x 37.0 x 40.8" (1976 x 940 x 1036mm)
	15474335	956	230 (60)				
	15474340	990	120 (60)				
	15474341	995	230 (60)				
Forma 700	11700372	706	230 (60)	-50°C to -86°C	Upright	23.0 (651.3)	77.8 x 37.0 x 40.8" (1976 x 940 x 1036mm)
	11700371	756	120 (60)				
Revco High Performance	1399070	ULT2330A	115 (60)	-30°C	Upright	23.3 (659)	79.2 x 37.2 x 28.0" (2012 x 945 x 711mm)
	13989229	ULT2330D	208/230 (60)				
Revco High Performance	13990205	UGL2320A	115 (60)	-20°C	Upright	23.3 (659)	79.2 x 37.2 x 28.0" (2012 x 945 x 711mm)
	13990207	UGL2320D	208/230 (60)				
Revco Ultima Plus	13989721	ULT258610A	115 (60)	-50°C to -86°C	Upright	24.4 (691)	77.8 x 36.2 x 47.7" (1975 x 920 x 1210mm)
	13989722	ULT258610D	208/203 (60)				
Revco Elite	13989226	ULT25405A	115 (60)	-10°C to -40°C	Upright	24.4 (691)	77.8 x 36.2 x 47.7" (1975 x 920 x 1210mm)
	13989227	ULT25405D	208/203 (60)				
Revco Elite Plus	13989715	ULT25866A	115 (60)	-50°C to -86°C	Upright	24.4 (691)	77.8 x 36.2 x 47.7" (1975 x 920 x 1210mm)
	13989716	ULT25866D	208/203 (60)				
Revco Value Plus	13989713	ULT25864A	115 (60)	-50°C to -86°C	Upright	24.4 (691)	77.8 x 36.2 x 47.7" (1975 x 920 x 1210mm)
	13989714	ULT25864D	208/203 (60)				
Revco Ultima II	13990258	ULT25409A	115 (60)	-10°C to -40°C	Upright	24.4 (691)	77.8 x 36.2 x 47.7" (1975 x 920 x 1210mm)
	13990259	ULT25409D	208/203 (60)				
Revco Value	13989223	ULT25403A	115 (60)	-10°C to -40°C	Upright	24.4 (691)	77.8 x 36.2 x 47.7" (1975 x 920 x 1210mm)
Revco Ultima Plus HD	13898230	ULT258610HDA	115 (60)	-50°C to -86°C	Upright	24.8 (702)	77.8 x 36.8 x 43.0" (1975 x 935 x 1092mm)
	13898231	ULT258610HDD	208/230 (60)				
Forma 8600	15474347	8607	230 (60)	-50°C to -86°C	Upright	28.0 (792.8)	77.8 x 37.0 x 46.8" (1976 x 940 x 1189mm)
Forma 900	15474334	907	230 (60)	-50°C to -86°C	Upright	28.0 (792.8)	77.8 x 37.0 x 46.8" (1976 x 940 x 1189mm)
Revco High Performance	13991127	ULT3030A	115 (60)	-30°C	Upright	29.2 (826)	79.2 x 37.2 x 34.0" (2012 x 945 x 864mm)
	13989230	ULT3030D	208/230 (60)				
Revco Ultima Plus HD	13898234	ULT328010HDD	208/230 (60)	-50°C to -86°C	Upright	31.4 (889)	77.8 x 36.8 x 48.0" (1975 x 935 x 1219mm)
Revco General Purpose	13990331	RLR4304A	115 (60)	+2°C to +10°C	Upright	43.0	76 x 72 x 53" (193 x 81 x 165cm)
Revco High Performance	22285651	ULT5030A	115 (60)	-30°C	Upright	51.1 (1447)	79.2 x 37.2 x 56.5" (2012 x 945 x 1435mm)
	22285652	ULT5030D	208/230 (60)				

# GS-07F-161BA

View all products at  
*fishersci.com or GSAAdvantage.gov*

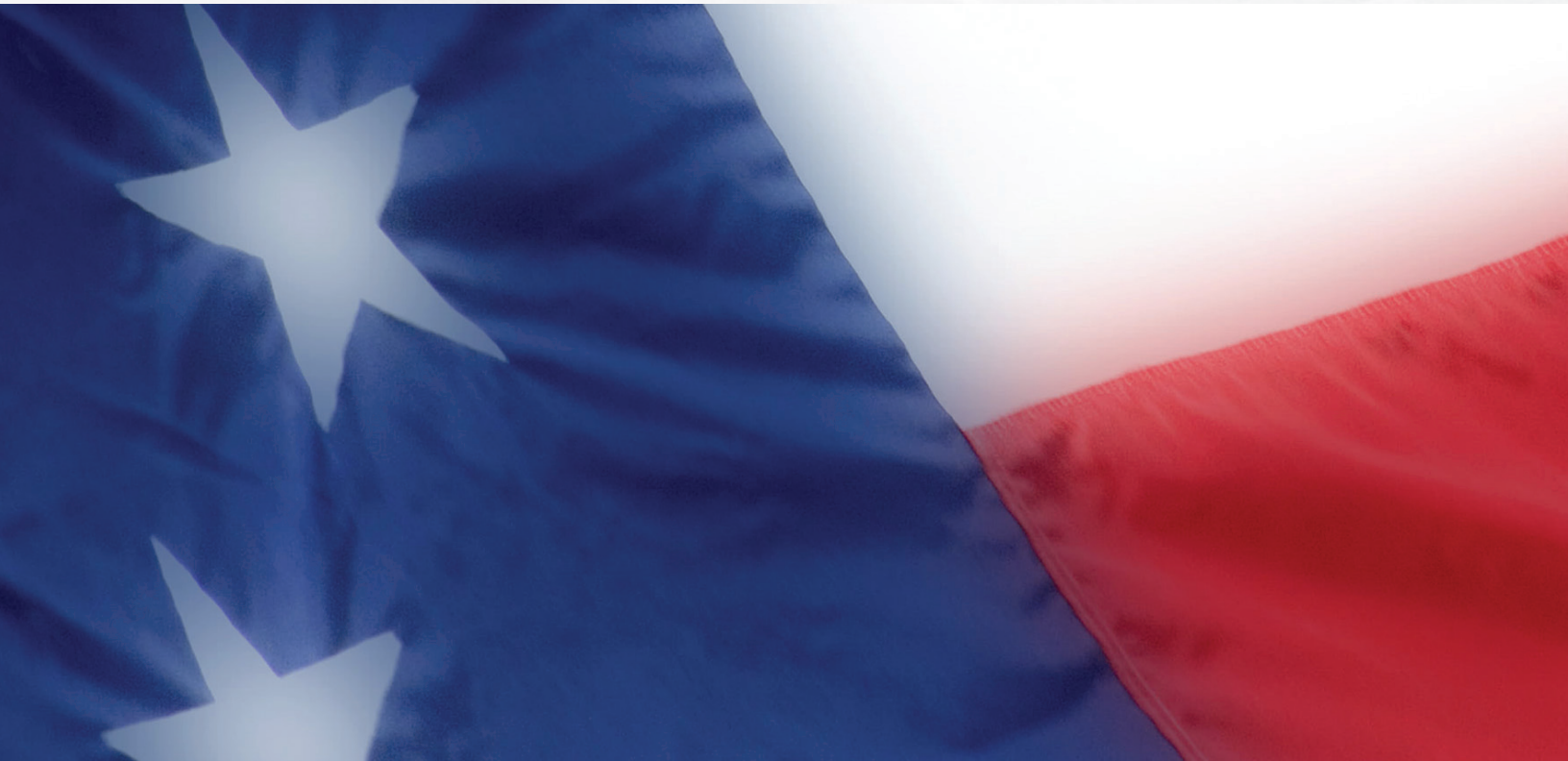
## FREEZERS

Model/Series	Fisher Scientific Item#	Thermo Scientific Item#	Voltage (Hz)	Temp. Range	Cabinet	Cu. Ft. (L)	Ext. Dimensions H x D x W
<b>Plasma Freezers</b>							
Revco	13991148	UFP430A	115 (60)	-30°C	Undercounter	4.9 (78)	34.0 x 28.9 x 24.0" (864 x 734 x 610mm)
Revco	1399083	UFP1230A	115 (60)	-30°C	Space sSaver	11.5 (273)	73.6 x 30.0 x 24.0" (1869 x 762 x 610mm)
Revco	22285706	UFP2330A	115 (60)	-30°C	Upright	23.3 (532)	79.2 x 37.2 x 28.0" (2012 x 945 x 711mm)
	13990423	UFP2330D	208/230 (60)				
Revco	13991124	UFP3030A	115 (60)	-30°C	Upright	29.2 (665)	79.2 x 37.2 x 34.0" (2012 x 945 x 864mm)
	13991125	UFP3030D	208/230 (60)				
Revco	22285707	UFP5030A	115 (60)	-30°C	Upright	51.1 (1064)	79.2 x 37.2 x 56.5" (2012 x 945 x 1435mm)
<b>Enzyme Freezers</b>							
Revco	13990206	UEN2320A	115 (60)	-20°C	Upright	23.3 (659)	79.2 x 37.2 x 28.0" (2012 x 945 x 711mm)
<b>Explosion-Proof and Flammable-Materials Storage Freezers</b>							
Revco	13990536	EXF418A	120 (60)	-20°C to -12°C	Upright	4.7 (133)	33.8 x 29.0 x 21.3" (85.8 x 73.4 x 54.1cm)
Revco	13990313	FMS418A	120 (60)	-20°C to -12°C	Undercounter	5.0 (141)	33.5 x 26.5 x 21.3" (85.1 x 67.3 x 54.0cm)
<b>Chest Freezers</b>							
Forma 700	11700360	708	115 (60)	-50°C to -86°C	Chest	3.0 (84.9)	43.8 x 28.8 x 28.5" (1113 x 732 x 724mm)
Revco Ultima Plus	13990426	ULT39010A	120 (60)	-50°C to -86°C	Chest	3.0 (84.9)	43.8 x 28.8 x 28.5" (1113 x 732 x 724mm)
Revco Ultima Plus	13990442	ULT35010A	120 (60)	-10°C to -40°C	Chest	3.0 (84.9)	43.8 x 28.8 x 28.5" (1113 x 732 x 724mm)
Revco Ultima II Cryogenic	1398661	ULT71509D	208/230 (60)	-140°C to -150°C	Chest	6.8 (193)	42.75 x 29 x 58" (109 x 74 x 148cm)
Revco Ultima II	13990187	ULT7909A	115 (60)	-40°C to -86°C	Chest	6.8 (193)	41 x 32 x 48.5" (104 x 80 x 123cm)
Revco Ultima II Cryogenic	1399021	ULT101409D	208/230 (60)	-140°C to -150°C	Chest	10.3 (292)	42.75 x 29 x 69" (109 x 74 x 176cm)
Forma 8600	15474348	8612	230 (60)	-50°C to -86°C	Chest	12.7 (359.6)	40.5 x 28.8 x 72.0" (1029 x 732 x 1829mm)
	15474349	8615	120 (60)				
Forma 700	11700363	712	230 (60)	-50°C to -86°C	Chest	12.7 (359.6)	40.5 x 28.8 x 72.0" (1029 x 732 x 1829mm)
	11700362	715	120 (60)				
Revco Ultima Plus	13990446	ULT135010A	120 (60)	-10°C to -40°C	Chest	12.7 (359.6)	40.5 x 28.8 x 72.0" (1029 x 732 x 1829mm)
	13990447	ULT135010D	208/203 (60)				
Forma 700	11700364	719	230 (60)	-50°C to -86°C	Chest	17.0 (481.4)	40.5 x 28.8 x 87.6" (1029 x 732 x 2225mm)
Revco Ultima Plus	13990434	ULT179010A	120 (60)	-50°C to -86°C	Chest	17.0 (481.4)	40.5 x 28.8 x 87.6" (1029 x 732 x 2225mm)
	13990435	ULT179010D	208/230 (60)				
Revco Ultima Plus	13990450	ULT175010A	120 (60)	-10°C to -40°C	Chest	17.0 (481.4)	40.5 x 28.8 x 87.6" (1029 x 732 x 2225mm)
	13990451	ULT175010D	208/230 (60)				
Forma 8600	15474350	8620	230 (60)	-50°C to -86°C	Chest	20.0 (566.3)	40.5 x 28.8 x 96.0" (1029 x 732 x 2438mm)
	15474351	8621	120 (60)				
Forma 700	11700365	720	230 (60)	-50°C to -86°C	Chest	20.0 (566.3)	40.5 x 28.8 x 96.0" (1029 x 732 x 2438mm)
	11700366	721	120 (60)				
Revco Ultima Plus	13990438	ULT209010A	120 (60)	-50°C to -86°C	Chest	20.0 (566.3)	40.5 x 28.8 x 96.0" (1029 x 732 x 2438mm)
	13990439	ULT209010D	208/230 (60)				
Revco Ultima Plus	13990454	ULT205010A	120 (60)	-10°C to -40°C	Chest	20.0 (566.3)	40.5 x 28.8 x 96.0" (1029 x 732 x 2438mm)
	13990455	ULT205010D	208/230 (60)				

**CENTRIFUGES**

<b>Model/Series</b>	<b>Fisher Scientific Item#</b>	<b>Thermo Scientific Item#</b>	<b>Voltage (Hz)</b>	<b>Description</b>	<b>Ext. Dimensions L x W x H (Open) inches (cm)</b>
<b>Centrifuge - Benchtop</b>					
ST 16	75004241	75004241	120 (60)	Ventilated	23.8 x 17.3 x 14.2 (34.3)" (60.5 x 44 x 36cm) (87cm)
	75004240	75004240	230 (60)		
ST 16R	75004381	75004381	120 (60)	Refrigerated	23.8 x 24.5 x 14.2 (34.3)" (60.5 x 62.3 x 36cm) (87cm)
	75004380	75004380	230 (60)		
ST40	75004510	75004510	120 (60)	Ventilated	26.4 x 22.2 x 14.2 (35.4)" (67 x 56.5 x 36cm) (90cm)
	75004509	75004509	230 (60)		
ST40R	75004525	75004525	120 (60)	Refrigerated	26.4 x 29.3 x 14.2 (35.4)" (67 x 74.5 x 36cm) (90cm)
	75004524	75004524	230 (60)		
Sorvall Legend XT	75004506	75004506	120 (60)	Ventilated	26.4 x 22.2 x 14.2 (35.4)" (67 x 56.5 x 36cm) (90cm)
	75004508	75004508	230 (60)		
Sorvall Legend XTR	75004521	75004521	120 (60)	Refrigerated	26.4 x 29.3 x 14.2 (35.4)" (67 x 74.5 x 36cm) (90cm)
	75004523	75004523	230 (60)		
Sorvall Legend X1	75004221	75004221	120 (60)	Ventilated	23.8 x 17.3 x 14.2 (34.3)" (60.5 x 44 x 36cm) (87cm)
	75004220	75004220	230 (60)		
Sorvall Legend X1R	75004261	75004261	120 (60)	Refrigerated	23.8 x 24.5 x 14.2 (34.3)" (60.5 x 62.3 x 36cm) (87cm)
	75004260	75004260	230 (60)		
Primo	75005184	75005184	120 (60)	Ventilated	18.7 x 15 x 12.4" (47.5 x 38 x 31.5cm)
	75005448	75005448	120 (60)	Refrigerated	19.4 x 22.8 x 12.3" (49.3 x 58 x 31.3cm)
Stratos	75005293	75005293	120 (60)	Refrigerated	23.4 x 25.2 x 15.6" (59.5 x 64 x 39.5cm)
	75005294	75005294	208 (60)		
<b>Microcentrifuge</b>					
Sorvall Legend Micro 17	75002431	75002431	120 (60)	Ventilated	13.75 x 9.63 x 8.88" (25.2 x 24.3 x 22.5cm)
	75002494	75002494	120 (60)		
	75002493	75002493	230 (60)		
Sorvall Legend Micro 17R	75002441	75002441	120 (60)	Refrigerated	17.5 x 11.63 x 12.88" (44.5 x 29.5 x 33cm)
	75002440	75002440	230 (60)		
Sorvall Legend Micro 21	75002436	75002436	120 (60)	Ventilated	13.75 x 9.63 x 8.88" (25.2 x 24.3 x 22.5cm)
	75002488	75002488	120 (60)		
	75002487	75002487	208 (60)		
Sorvall Legend Micro 21R	75002446	75002446	120 (60)	Refrigerated	17.5 x 11.63 x 12.88" (44.5 x 29.5 x 33cm)
	75002445	75002445	230 (60)		
	75002490	75002490	120 (60)		
	75002489	75002489	230 (60)		

<b>Model/Series</b>	<b>Fisher Scientific Item#</b>	<b>Thermo Scientific Item#</b>	<b>Centrifuge</b>	<b>Rotor</b>	<b>Buckets (set of 4)</b>	<b>Adapters (set of 4)</b>
<b>Centrifuge - Packages</b>						
Cell Culture Packages	75218382	75218382	Sorvall Legend X1	TX-400 Swinging Bucket	400mL Round	4 x 50mL conical 9 x 15mL conical
	75618382	75618382	Sorvall Legend X1R			
	75103839	75103839	ST 40	TX-750 Swinging Bucket	750mL Round	7 x 50mL conical 14 x 15mL conical
	75253839	75253839	ST 40R			
	75063839	75063839	Sorvall Legend XT			
	75213839	75213839	Sorvall Legend XTR	BIOLiner Swinging Bucket	BIOLiner Bucket	10 x 50mL conical 22 x 15mL conical
	75107473	75107473	ST 40			
	75257473	75257473	ST 40R			
75067473	75067473	Sorvall Legend XT				
Blood Processing Packages	75217473	75217473	Sorvall Legend XTR	TX-200 Swinging Bucket	200mL Round	7 x 15/10mL blood collection 8 x 5/7mL blood collection
	75410885	75410885	ST 16			
	75810885	75810885	ST 16R	TX-400 Swinging Bucket	400mL Round	14 x 15/10mL blood collection 19 x 5/7mL blood collection
	75418180	75418180	ST 16			
	75818180	75818180	ST 16R	TX-750 Swinging Bucket	750mL Round	21 x 10mL blood collection 27 x 5/7mL blood collection
	75101923	75101923	ST 40			
	75251923	75251923	ST 40R	BIOLiner Swinging Bucket	BIOLiner Bucket	37 x 10mL Vacutainer™ 49 x 5/7mL Vacutainer
75107271	75107271	ST 40				
75257271	75257271	ST 40R				
Microplate Processing Packages	75412452	75412452	ST 16	M-20 Microplate		Carriers for microplates and T-75 Horizontal Flasks
	75812452	75812452	ST 16R			
	75060817	75060817	Sorvall Legend XT	TX-750 Swinging Bucket		
	75210817	75210817	Sorvall Legend XTR			
Carbon Fiber Packages	75612963	75612963	Sorvall Legend X1R	TX-400 Swinging Bucket Fiberlite F15-8x50c	400mL Round	
	75210062	75210062	Sorvall Legend XTR	TX-750 Swinging Bucket Fiberlite F15-8x50c	750mL Round	
	75210063	75210063				
	75210061	75210061				
	75216362	75216362				
75236362	75236362					



© 2014 Thermo Fisher Scientific Inc. All rights reserved.  
Trademarks used are owned as indicated at [www.fishersci.com/trademarks](http://www.fishersci.com/trademarks).

**In the United States:**

For customer service, call 1-800-766-7000

To fax an order, use 1-800-926-1166

To order online: [www.fishersci.com](http://www.fishersci.com)

Litho in U.S.A. 10\_2720/14\_0532 JD/TE 3/14 BN0707101



**Fisher  
Scientific**

A Thermo Fisher Scientific Brand