



Classic Full Size Torso with Interchangeable Sex Organs, 24 Parts

S15533

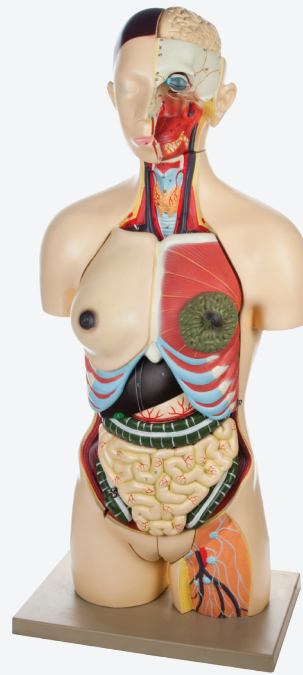
Dual sex torso with open back fully represents the anatomy of the human upper body.

Contains the following parts

- Head - 1 Part
- Eye - 1 Part
- Torso - 1 Part
- Heart - 2 Parts
- Stomach - 2 Parts
- Kidney - 1 Part
- Male Genital Organ - 4 Parts
- Vertebra - 1 Part
- Brain - 1 Part
- Breast - 1 Part
- Lungs - 2 Parts
- Liver - 1 Part
- Intestine - 2 Parts
- Artery & Vein - 1 Part
- Female Genital Organ - 3 Parts
- 7th Vertebra - 1 Part

Supplied with English Key Card.

Size 38 x 24 x 85 cm approx. Weight 8750 g approx.



www.eiscolabs.com

Half Size Torso with Dissectable Head, 11 Parts

S15585

Half size torso is excellent for desk top study. Dissectable into 11 parts, head is 3 parts including half of brain.

Contains the following parts

- Head - 2 Parts
- Lungs - 2 Parts
- Stomach - 1 Part
- Brain - 1 Part
- Heart - 2 Parts
- Intestine - 2 Parts
- Torso - 1 Part
- Liver - 1 Part

Supplied with English Key Card.

Size 26 x 18 x 49 cm approx. Weight 1900 g approx.



Human Eye Model Enlarged 3 Times 7 Parts

S95929

The upper half of the sclera with cornea and eye muscle attachments, both halves of choroids with iris and retina, lens and vitreous humour are removable. On base, supplied with English Key Card.

Size 13 x 13 x 16 cm approx.



Human Heart Enlarged 3 Times 7 Parts

S96554

Enlarged 3 times. Sectioned so that both ventricles and atria open to expose the valves. Large blood vessels near the heart and musculature of the heart are shown. Separates into 7 parts. On base, supplied with English Key Card.

Size 15 x 13 x 27 cm approx.



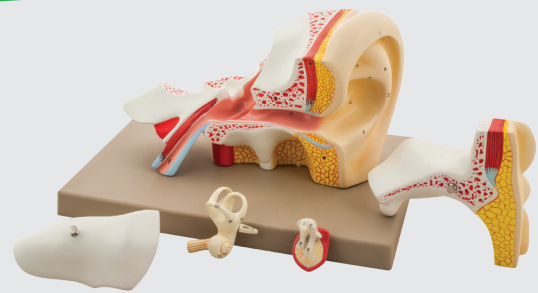
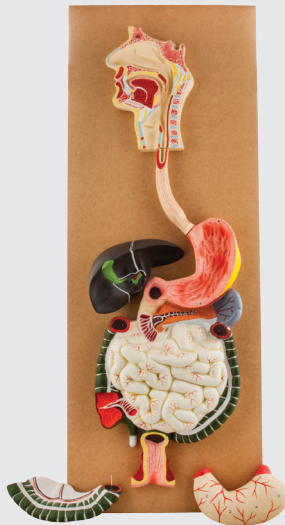
HUMAN ANATOMY MODELS

Human Digestive System

3 Parts

S15597

Life size model showing nose, mouth cavity and pharynx, liver with gall bladder, pancreas and spleen. Transverse colon and front stomach wall are removable. Mounted on base. Supplied with English Key Card. Size 82 x 31 x 10 cm approx.



Human Ear - 5 Parts

S95930

Enlarged approx. 5 times. The petros portion of the temporal bone section of the auditory canal are removable, with labyrinth can be taken out and opened. The tympanic membrane with malleus and incus can be removed in 5 parts. On base. Supplied with English Key Card. Size 33 x 23 x 20 cm approx.

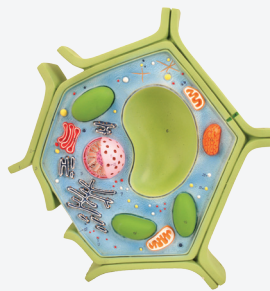
BOTANY MODELS



Typical Flower

S15626

Model of a typical flower, all parts detachable, ovary with a single ovule inside. On base. Supplied with English Key Card. Size 37 x 37 x 35 cm approx.



Plant Cell

S15638

This plant cell model shows details of cell wall and inner details of cell, nucleus is separated and defined in a 3-D way cut section of chloroplast is shown. Mounted on base. Supplied with English Key Card.

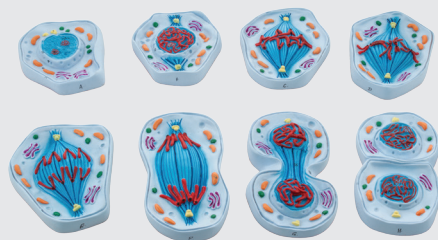


Dicot Stem T.S.

S15630

Showing various tissues vascular bundles in transverse section of a dicot stem of sunflower. On base. Supplied with English Key Card. Size 33 x 25 x 6 cm approx.

CELL MODELS



Mitosis Model Set of 8

S13524

Robust models illustrating the process of mitotic cell division. The chromosomes are painted to allow easy identification. Each model approx. 10 x 15 cm.



Plant Mitosis

S15635

Set of 10 models showing all the stages of karyokinesis and cytokinesis from metabolic cell of the formation. On base. Supplied with English Key Card. Size 71 x 41 x 7 cm approx.



Plant and Animal Cell Comparison

S15637

Models of animal cell and plant cell enables teaching of their structures. Set of 2 contains 12 electro microscopic illustrations of different cell structures. Mounted on stand. Supplied with English Key Card. Each model approx. 12 x 12 x 30 cm.

In the United States:

For customer service, call 1-800-766-7000
To fax an order, use 1-800-926-1166
To order online: www.fishersci.com

www.fishersci.com/eisco

